



**MAINSTREAM COMPUTING FOR A
VARIETY OF BUSINESS USES**



Our smallest desktop series is built to be energy-efficient and has an ultra-compact footprint 5X smaller than a 14" laptop.

ThinkCentre M90n Nano IoT

Smarter
technology
for all

Lenovo

A versatile gateway for your IoT ecosystem, the ThinkCentre Nano IoT comes with edge-computing capabilities – with 8th Gen Intel processors, up to 8GB DDR4 memory and ultra-fast M.2 PCIe SSD storage. There are plenty of ports, wireless connectivity options and an optional I/O BOX, to connect everything from sensors, IoT endpoints, and legacy devices to cloud-based servers.



REASONS TO BUY

The compact size with options for VESA, DIN-rail and wall mounting means it can be placed almost anywhere – from controlled testing environments indoors to remote field locations. There's a Kensington™ lock slot to protect against device theft.

MIL-SPEC tested for durability, the device can withstand unanticipated temperature shocks and environmental factors like heat, dust and humidity. The innovative fan-less design ensures efficient heat dissipation for improved performance.

With advanced power management features and a 15W CPU, this device is one of our most energy efficient computers. Optimized to reduce power consumption, with Energy Star® and EPEAT® Silver certifications.

ThinkCentre M90n Nano IoT

KEY SPECIFICATIONS

Processor	Intel Celeron or 8th Gen Core i3 processor
Operating System	Powered by Windows 10 Pro or Windows 10 IoT Enterprise
Graphics	Intel UHD Graphics 620/610 in processor
Memory	up to 4GB DDR4-2666
Storage	M.2 SSD: up to 2x 1TB M.2 PCIe NVMe optional 32GB Intel Optane memory
Power Supply	<i>One of the following</i> 65W 88% Adapter 65W 88% Adapter (Wide Temperature)
Dimensions	Width: 179mm (7.05") Depth: 88mm (3.46") Height: 34.5mm (1.36")
Weight	starting at 0.72kg (1.58lb)

GREEN CERTIFICATIONS

EPEAT Silver. Energy Star 7.1.

OTHER CERTIFICATIONS

MIL-STD-810G military testing. TCO 8.0. TUV Ultra Low Noise.

CONNECTIVITY

Front I/O	2x USB 3.1 Gen2, 1x USB-C 3.1 Gen 2, one audio combo jack (3.5mm), 2x serial
Rear I/O	With Celeron: 1x USB 2.0, 1x USB-C 3.1 Gen 2 (with display function, support power-in [20V, > 45W]), 1x ethernet (RJ-45), 1x DisplayPort. With Core i3: 1x USB 3.1 Gen2, 1x USB-C 3.1 Gen 2 (with display function, support power-in [20V, > 45W]), 2x ethernet (RJ-45), 1x DisplayPort.
WLAN + Bluetooth	<i>One of the following</i> Intel 9462 11ac, 1x1 + BT5.0 Intel 9560 11ac, 2x2 + BT5.0 Intel 9560 11ac, 2x2 + BT5.0, vPro RTL8822CE 11ac, 1x1 + BT5.0 RTL8822CE 11ac, 2x2 + BT5.0
Ethernet	<i>One of the following</i> Intel I219-LM + RTL8111H, 2x RJ45 RTL8111K + RTL8111H, 2x RJ45 RTL8111K, 1x RJ45

SECURITY & PRIVACY

Chassis Intrusion Switch
Kensington lock slot
Hardware TPM

MANAGEABILITY

Intel vPro, DASH (optional)

Information presented here may represent the maximum possible configurations for this product, but it does not necessarily reflect what is available in your region. Please ask your rep or check the specifications for specific Part Numbers in your region. © 2020 Lenovo. Products are available while supplies last. Lenovo is not responsible for photographic or typographic errors. Lenovo, the Lenovo logo, ThinkPad, ThinkCentre, ThinkBook, ThinkStation and ThinkVision are trademarks or registered trademarks of Lenovo. 3rd party product and service names may be trademarks of others. Depending on factors such as the processing capability of peripheral devices, file attributes, system configuration and operating environments, the actual data transfer rate of USB connectors will vary and is typically slower than published standards.

OPTIONAL MECHANICAL PERIPHERALS

Nano Din Rail Mount
Nano I/O Expansion Box

Nano Monitor Clamp
Nano Power Cage Kit
Nano Tiny-in-One Cube
Nano VESA mount

Recommended for this device

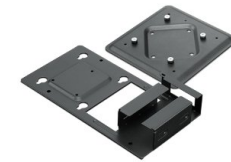


ThinkCentre Nano IoT IOBOX

Connects to Nano IoT PCs via a Type-C connection to support additional I/O features such as Power over Ethernet (PoE), Digital Input/Output, and a Serial Port.

Single-cable support for voltage input to the IOBOX and Nano IoT PC simultaneously.

Compatible with ThinkCentre Nano IoT fan-less model PC.



ThinkCentre Nano Power Cage Kit

Integrate a power supply alongside a ThinkCentre Nano for tidier cable routing

Fits 65W & 90W Lenovo power adapters smaller than 105x44x28mm (4.1x1.7x1.1")

VESA mounting can be attached behind displays or secured on walls, ceilings & furniture



Premier Support

Talk directly with advanced technical support agents

Support for software & hardware

Next business day onsite repairs