

# Smarter creates the future

## Reimagine your radiology reading room with Lenovo and LG

Medical imaging is a key factor in diagnosis, treatment, and patient outcomes. Your radiology professionals need equipment they can depend on for quality, consistency, and optimal performance.

Lenovo and LG Electronics are working together to deliver medical imaging advancements to the healthcare community. Lenovo now offers a complete diagnostic solution, pairing LG clinical and diagnostic monitors with Lenovo Workstations with the Intel vPro® platform. This solution gives providers remote manageability no matter where they work, even if the OS is down.

With versatile workstation form factors including compact, mobile, and tower options, this solution offers flexibility and scalability across a range of medical imaging environments — from healthcare facilities to remote teleradiology locations. Lenovo Workstations and LG displays are tested, certified, and supported together for exceptional user experience and IT peace of mind.

- **PACS ISV-certified and compatible**
- **Auto-calibration displays**
- **Multiple workstation form factors**
- **Versatile work-from-anywhere solution**
- **Cost-effective**

## Put Lenovo and LG to work in your healthcare environment

### Reliability

- Backed by industry-leading Lenovo and LG brands
- Lowest workstation repair rates in the first three years among competitors

### Compatibility

- Workstations and displays certified to work together
- Displays can use our workstation NVIDIA graphics
- Solutions meet all PACS specifications

### Flexibility

- Multiple workstation form factors
- Easy-to-add memory, storage, and GPUs
- Scalable across departments, onsite, remote



Built for Business



# Recommended Lenovo ThinkStation® and ThinkPad® devices

## 3MP DIAGNOSTIC SOLUTION

### ThinkStation P350 Tiny

- CPU:** Up to Intel® Core™ i9 vPro® processor
- Memory:** Up to 64GB DDR4-3200
- GPU:** Up to Nvidia T1000
- Display:** LG 21.3" 3MP
  - 1536 x 2048 | Multi-resolution mode (2/3MP)
  - 1100cd/m<sup>2</sup> brightness
  - Focus view | Pathology mode
  - Backlight sensor | Front sensor | Auto luminance sensor

## 12MP DIAGNOSTIC SOLUTION

### ThinkStation P520

- CPU:** Intel® Xeon® W Series
- Memory:** Up to 512GB DDR4-2933
- GPU:** Up to 2x Nvidia RTX A6000
- Display:** LG 31" 12MP
  - 4200 x 2800 | Multi-resolution mode (12/6MP)
  - Front sensor calibration
  - Focus view
  - Light box mode | Pathology mode

## 8MP DIAGNOSTIC SOLUTION

### ThinkStation P350 Tower

- CPU:** Up to Intel® Xeon® W Series
- Memory:** Up to 128GB DDR4-3200
- GPU:** Up to Nvidia RTX A5000
- Display:** LG 8MP diagnostic display
  - 3840 x 2160 | Picture by Picture feature
  - DICOM-ready | FDA-approved
  - LG Nano IPS™ Technology

## MOBILE WORKSTATION SOLUTION

### ThinkPad P1

- CPU:** Up to Intel® Core™ i9 vPro® processor
- Memory:** Up to 64GB DDR4-3200
- GPU:** Up to Nvidia RTX A5000
- Display:** LG 21.3" 3MP
  - 1536 x 2048 | Multi-resolution mode (2/3MP)
  - 1100cd/m<sup>2</sup> brightness
  - Focus view | Pathology mode
  - Backlight sensor | Front sensor | Auto luminance sensor



ThinkStation P350 Tower



ThinkStation P350 Tiny



ThinkStation P520



ThinkPad P1



Built for Business







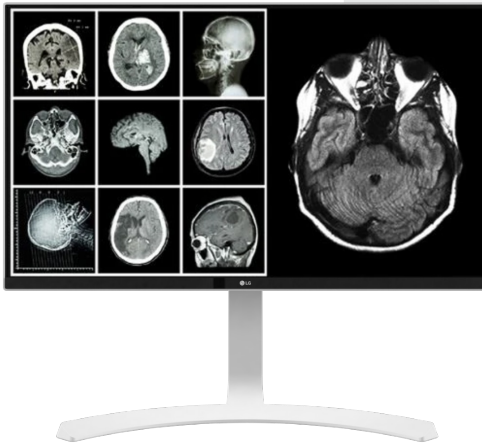
Smarter  
technology  
for all

Lenovo

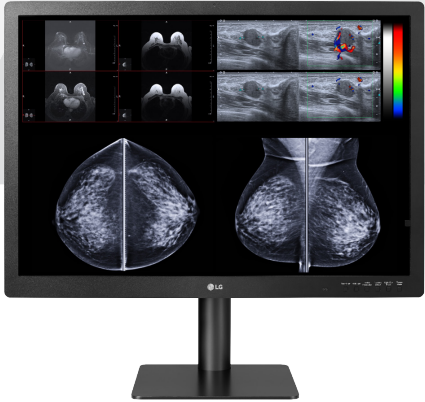
# Recommended LG diagnostic displays



LG 3MP | PN: 78129169



LG 8MP | PN: 78094615



LG 12MP | PN: 78094614



Learn more about Lenovo solutions for healthcare powered by the Intel vPro® platform at [www.lenovo.com/Health](http://www.lenovo.com/Health).