

Lenovo  
Education

# Lenovo + Microsoft Windows 11

Higher Education  
Upgrade Reference Guide

 Windows 11

Unlock the power of  
creativity and collaboration

With modern Lenovo devices running Microsoft Windows 11, IT leaders harness device management to unlock limitless learning and enable a borderless campus for all students — wherever they learn.

Smarter  
technology  
for all

Lenovo



Unlock the power of  
creativity and collaboration

### In this guide

Why Lenovo Education and Windows 11?	3
Devices eligible for free upgrade	7
Windows 11 overview for IT pros	8
Upgrade checklist	9
Technical specs and frequently asked questions	10
Additional resources	12



# Why upgrade to Windows 11 with Lenovo?

Where and how students in higher education institutions learn has changed dramatically — and so has IT management. For today's IT teams to work confidently across hybrid learning environments, they need to deploy, secure, and manage devices for faculty, administrators, and students.

As the educational landscape evolves, Lenovo is there. With 20 years of education technology leadership and a team of experts focused exclusively on higher education, we're always in pursuit of integrated solutions that free up faculty, inspire learners, and simplify IT management without interruption.

That's why we're excited about the Windows 11 operating system upgrade and want to help your community feel just as confident.

**Windows 11 is a reimagined Windows for a new era of learning.**

Purposeful new features and functionality help colleges and universities unlock the full potential of every student, giving them powerful tools to learn, collaborate, and create in a secure and trusted environment.

Users can create multiple custom desktops on one PC, simplifying routine tasks like data entry and scheduling, and get things done with fewer clicks and more intuitive navigation.

**But a streamlined UI is just the start.**

Windows 11 also focuses on today's most pressing higher education IT concerns — security, manageability, and learning outcomes. The benefits of Windows 11 are amplified on Lenovo Education devices engineered with critical features necessary for any borderless campus to thrive.



Unlock the power of  
creativity and collaboration



## Improve student focus for all

- A centered Start button, clean layout, and easy navigation
- Smart noise canceling and blur
- The most inclusively designed Windows ever, using voice, digital pen, and touch

## Simplify class management

- Create desktops for each class or subject and use the taskbar to switch between them instantly
- Organize desktops with snap layouts and jump back in quickly with snap groups
- Keep assignments at hand with customizable widgets integrated in the desktop and taskbar

## Lenovo's powerful security + Windows 11's pre-enabled protection: Ready for a flexible future

**Protecting student information** has never been more essential. The role of the internet in the classroom and at home is growing. Schools are shifting to cloud-based technologies, multiplying security threats. The powerful built-in security of Lenovo ThinkShield and Windows 11 fortifies the borderless campus, mitigates risk with an end-to-end approach to security, and delivers the best protection possible.

**Enhanced privacy and security controls** from the device to the cloud allow for customized monthly updates, and new, always-on protections safeguard the OS while also supporting international and regional standards like FERPA, GDPR, and HIPAA.

**Built-in security** ensures protections are ready without having to configure devices. Microsoft has increased the security baseline by requiring a security chip (TPM 2) and ensuring protections are built in and turned on by default to protect from malware and sophisticated attacks.

**Pre-enabled virtualization-based security (VBS) and hypervisor-enforced code integrity (HVCI)** safeguard the operating system and information stored in memory. Secured-core PCs built on this foundation are twice as resilient against malware.<sup>1</sup>

**Defending your community from tomorrow's threats** requires innovative security solutions like those on Lenovo devices running Windows 11. Secure the future of education with Zero Trust-ready OS and Lenovo's sophisticated suite of built-in applications for hands-off endpoint and data protection and manageability.



Unlock the power of creativity and collaboration

## Lenovo security innovations fortify a fleet running Windows 11

### ThinkShield

Fully customizable hardware, software, and services solutions to secure your enterprise.

### Secure Wipe 2.0

Delete sensitive data on a drive without external tools or removing the drive, and run log reports confirming the SSD or HDD has been wiped.

### Firmware Resiliency 2.0

Expand self-healing capabilities beyond the core BIOS. Provides autonomous, non-bypassable, and immutable attestation functionality that becomes the additional hardware root of trust measure and verifies the signatures of multiple parts of the platform hardware, firmware, and configuration.

### Human presence detection

Screen lock detects when the user leaves and automatically locks the system.

### Non-soldered SSDs

Remove before servicing to secure data and keep it under IT control.

### Intelligent PC diagnostics

Use a simple smartphone app to track more precise servicing results.

### ThinkShutter

Gain extra privacy control with a built-in shutter that manually slides over the webcam.

# 2/3

of businesses that suffered a breach didn't know about it for several months.<sup>2</sup>

There was a

# 300%

increase in identity attacks between 2018 and 2019.<sup>3</sup>

### Gain more control over security

- Deploy, secure, and manage devices remotely from the cloud
- Save time and money with zero-touch deployment, including school security policies\*
- Apply the same security policies to all devices with expanded support for Group Policy administrative templates in MDM solutions like Microsoft Endpoint Manager\*

\* Active Directory and internet connection required



## Lenovo's smarter IT + Windows 11's seamless setup: Productivity from the get-go

With Windows 11 remote deployment and compliance, you can deploy remote PCs through the cloud in compliance with district policies. Lenovo devices running Windows 11 give your remote community the same advanced security protections they would get on campus, and you'll be able to use Windows Autopilot cloud-based provisioning technology to easily pre-configure new devices.

Cloud-managed security updates offer additional control. Intune for Education, a cloud-based mobile device management (MDM) service for schools and institutions, helps IT manage devices, users, and apps so educators and students stay productive while keeping school and student data secure.

Windows 11 also allows for better performance consistency — critical for IT — across device configurations with new minimum system requirements. In terms of ease of migration, Windows 11 is built on the same core as Windows 10, supporting the same IT management tools that you use today.

Most software and accessories that worked with Windows 10 are expected to work with Windows 11, including hands-free setup and management options that allow for rapid installation of the apps schools and educators rely on to design and deliver successful hybrid courses — like Microsoft 365.



Unlock the power of  
creativity and collaboration



ThinkPad® L13 Yoga

### Lenovo devices designed for the borderless campus complement an OS designed for hybrid learning

#### **ThinkPad® E14**

Our 14" ThinkPad that's built to run seamlessly all day, plus Windows 11's remote-readiness, means exciting instruction can happen anywhere with students everywhere.

#### **ThinkPad® L13 Yoga Gen 2**

Our 2-in-1 ThinkPad with a 360-degree hinge, plus Windows 11's fluid tablet experience and snap layout, makes way for students of all learning styles.

#### **ThinkPad® P1**

Our ultra-portable, ultra-powerful mobile workstation, plus Windows 11's customizable UX, powers endless possibilities for every student.

## Lenovo's best-in-class durability + Windows 11's streamlined UX: Accessibility for all

At the heart of our education solutions is Lenovo compute and the devices it powers. We offer a range of laptops and tablets made to withstand accidental knocks, drops, and spills.

When powered by Windows 11, these devices help instructors enable communication, collaboration, creativity, and critical thinking skills that students need to succeed in college and in life. Windows 11 uses the latest advances in user-centered design to create a more intuitive, more productive interface that leaves everyone free to focus on education.

On touchscreen devices like the ThinkPad L13 Yoga, students gain an enhanced experience with greater accessibility and more adaptive controls, making it easier to type or move and resize windows.

This empowers students of all learning styles to access materials independently, while professors can personalize learning for every member of their class and make the best use of their time together.

Lenovo devices with Windows 11 also offer a smarter way to collaborate with Microsoft Teams, making it easier to meet, teach, and share content. New tools that reduce distraction, like background blur and settings to minimize visual clutter, help all students focus and do their best work — whether they're at off campus or in the classroom.

Families and institutions can be confident that these are the technologies today's students will need to be successful in the classroom and in their careers of the future.



Unlock the power of  
creativity and collaboration

## Lenovo performance innovations elevate Windows 11 user-focused features



**Multifinger touch** for a more fluid tablet experience



**Personalized widgets** to create individual learning environments



**Intelligent noise canceling and blur** for more efficient hybrid instruction



**Expanded gesture, voice, and pen interactivity** to type using their voice or write with a digital pen in almost any app



**Snap groups** to “snap” together apps or create a grouping for a particular project

### Streamline administrative duties

- Pin virtual apps to the taskbar and run them as if on the hard drive with Azure Virtual Desktop\*\*
- Automate tasks across applications with a low-code, guided process and pre-built connectors
- Search apps, websites, Windows settings, assignments, grades, or personnel from one place with Microsoft Search\*\*\*

\*\* Azure Virtual Desktop license required  
\*\*\* Microsoft 365 required

## Find the right device for each department

For IT leaders who need a PC designed for the modern borderless campus, Lenovo Education devices running Windows 11 provide the ultimate learning experience from anywhere without compromising performance or security.

[Explore our solutions built for higher education and find expert support here.](#)



# Lenovo Education devices with free upgrade to Windows 11\*

Plan, manage, and secure your college or university with confidence. Provide an empowering PC experience with the following devices, designed with higher ed in mind. All are eligible for a free upgrade to Windows 11.\*



Unlock the power of  
creativity and collaboration



## ThinkPad® models

ThinkPad L13  
ThinkPad L13 Yoga  
ThinkPad L13 Yoga Gen 2  
ThinkPad E14  
ThinkPad E14 Gen 2  
ThinkPad E14 Gen 3  
ThinkPad X1 Yoga Gen 3  
ThinkPad X1 Yoga Gen 4  
ThinkPad X1 Yoga Gen 5  
ThinkPad X1 Yoga Gen 6

## Notebook

Lenovo 14w (*limited  
ThinkShield functionality*)

## Workstations

ThinkStation® P350 Tiny  
ThinkPad P15  
ThinkPad P15 Gen 2  
ThinkPad P15g  
ThinkPad P15s  
ThinkPad P15s Gen 2  
ThinkPad P15v Gen 1  
ThinkPad P15v Gen 2  
ThinkPad P1  
ThinkPad P1 Gen 2  
ThinkPad P1 Gen 3  
ThinkPad P1 Gen 4  
ThinkPad P14s  
ThinkPad P14s Gen 2  
ThinkPad P14s AMD Gen 1  
ThinkPad P14s AMD Gen 2

## See the Lenovo devices eligible for a free upgrade

Lenovo Education devices are designed to meet all needs, whether you need raw processing power for resource-intensive applications, tailored devices for flexible working, or even integrated pens for sketching out onscreen drawings.

[Explore them all here.](#)

\* When available. The Windows 11 upgrade will be delivered to qualifying devices late 2021 into 2022. Timing varies by device. Certain features require specific hardware (see [aka.ms/windows11-spec](https://aka.ms/windows11-spec))

## We're with you all the way

As the largest global provider of PCs in the education sector, we know what it takes to ensure institutions and students have a robust tech foundation to drive success. Learn more about all our [higher education solutions](#).

# Lenovo's Windows 11 overview for IT pros

Moving to Windows 11 will feel more like an update than a major upgrade. It delivers a new user experience and features benefits designed to give everyone — from students to staff — a more inspiring and secure hybrid learning experience. All the new Microsoft OS benefits are amplified by the quality, design, and innovation of modern Lenovo devices. Here's what you need to know.



Unlock the power of  
creativity and collaboration

## Windows 11 in brief

Windows 11 provides a familiar but modern and refreshed interface for a new era of digital learning, helping educators unlock the full potential of every student — giving them powerful tools to learn, collaborate, and create in a secure and trusted environment.

- **Powerful for educators.** Offers new productivity features and functionality designed to meet the challenges of the borderless campus, with a completely refreshed look and feel that helps users get more done with less stress.
- **Consistent for IT.** Fits right into existing processes. Windows 11 is based on the same foundation as Windows 10, so it's consistent for IT and will support the same IT management tools you use today.
- **Secure for all.** Powerful built-in security including hardware-based isolation, encryption, and malware protection. Cloud configuration simply secures a Windows 11 device for curated apps and access. App compatibility and cloud management make adoption easy.

## Timeline to accelerate a modern borderless campus

**Now.** Most devices available for purchase now will be upgradable to Windows 11.

**Late 2021.** PCs with Windows 11 pre-installed will be available later this year.

**Early 2022.** The upgrade is expected to be available for current Windows 10 PCs in early 2022. Not all eligible Windows 10 PCs will be offered the upgrade at the same time. Windows will send a notification once an eligible Windows 10 PC has been tested and validated for the free upgrade. Once the upgrade rollout has started, users can check the status of a device by navigating to "Windows Update" in "Settings."

**October 14, 2025.** Windows 10 remains supported through October 14, 2025, as originally announced at its launch. Customers using long-term service releases (LTSC and LTSB) will continue to be supported through those published end-of-support dates.

## Noteworthy feature benefits for a flexible future

- **Zero Trust-ready OS** to protect data and access, anywhere
- **Simple, powerful UX** to improve educator productivity
- **Customizable desktop, workflow automation, and snap layout** for a personalized school day that supports learning objectives
- **Smarter campus collaboration** with Microsoft Teams



# Six steps for migrating to Windows 11

Lenovo and Windows 11 are hybrid learning's dynamic duo. Planning your institution's upgrade today is a smart IT strategy.

## Get support for a smooth transition

Whether you're getting a new Lenovo Education device or upgrading an entire department, our Microsoft-certified experts help any institution migrate with ease and take full advantage of this industry-leading solution. Speak with your Lenovo representative today.



Unlock the power of  
creativity and collaboration

# 1

## Learn the system requirements.

Review the **basic and features-specific requirements** for installing Windows 11 on a PC.

# 2

## Inventory your fleet's compatibility.

Determine which devices in your network meet the minimum system requirements. Colleges and universities will be able to move eligible PCs directly to Windows 11 using Windows Update for Business.

# 3

## Confirm with partners and check accessories.

Most software (including third-party ISV security solutions) and accessories that work with Windows 10 are expected to work with Windows 11. Check with your software publisher or accessory manufacturer for specific details on your products.

# 4

## Validate business-critical applications.

App compatibility is a core design tenet of Windows 11. For peace of mind, use **Test Base for Microsoft 365** to test your applications in preview. If any compatibility issues arise, Microsoft App Assure will remediate them.

# 5

## Develop a rollout schedule.

The upgrade is slated to begin in late 2021 and continue into 2022, but specific timing will vary by device. If a device doesn't meet the basic system requirements, you may not be able to install Windows 11 and should include time in your plan to purchase an upgradable PC.

# 6

## Enlist an expert.

As a trusted Microsoft partner with certified global expertise, Lenovo can help deploy, configure, and support the latest solutions so you can unlock all the benefits of Windows 11.

# Technical specs and higher ed IT team frequently asked questions

## Are the Lenovo devices in my current fleet upgradable?

If existing Lenovo PCs in your institution are running the current version of Windows 10 and meet the minimum hardware specifications to run Windows 11, they will be able to upgrade. Specific timing will vary by device. Windows will send a notification once an eligible PC has been tested and validated for the free upgrade, starting in early 2022.

## Which Lenovo devices that I buy now will be upgradable to Windows 11?

We offer a wide selection with Windows 11 pre-loaded or upgradable to the new system. Look for devices that indicate they are eligible for the upgrade or ask your Lenovo representative to confirm. For a full list of compatible Lenovo devices, refer to our [complete list](#).

## What is an update versus an upgrade?

An update is a change within a version of a Windows product — for example, moving from Windows 10, version 2004 (the Windows 10 May 2020 update) to Windows 10, version 20H2 (the Windows 10 October 2020 update). An upgrade is when you change OS versions — for example, moving from Windows 10 to Windows 11, or when you upgrade to a higher edition within the same OS version (e.g., Windows 10 Home to Windows 10 Pro).

## What are the basics of the free upgrade offer for Windows 11?

The upgrade to Windows 11 is available for devices running Windows 10, version 20H1 or newer, on eligible hardware. Please view the [full minimum hardware requirements and specs](#).



Unlock the power of  
creativity and collaboration

## Basic requirements for a college or university installing Windows 11

### Processor

1 GHz or faster with 2 or more cores on a compatible 64-bit processor or system on a chip (SoC)

### RAM

4GB

### Storage

64 GB or larger storage device

### Firmware

UEFI system, Secure Boot-capable

### TPM

Version 2.0

### Graphics card

Compatible with DirectX 12 or later with WDDM 2.0 driver

### Display

High definition (720p) display that is greater than 9" diagonally, 8 bits per color channel

### Internet access

A significant download is required to complete this upgrade and ISP fees may apply in areas where the internet is metered

### Other

Some features in Windows 11 have **increased hardware requirements** and some require a Microsoft account

We recommend Windows 11-compatible devices from the **Lenovo Education** series to unlock limitless learning.



## Higher ed IT team frequently asked questions (continued)

### **Will my current Windows 10 applications, devices, and accessories work with Windows 11?**

Yes, most applications, devices, and accessories that worked with Windows 10 will be compatible with Windows 11. You can also check with the software, device, or accessory manufacturer to confirm compatibility.

### **Will all my third-party Windows 11 security solutions continue to work across Windows 10 and Windows 11? Will I have to upgrade those solutions before they are supported on Windows 11 and Windows 10?**

Most software and accessories that worked with Windows 10 are expected to work with Windows 11. Check with your software publisher or accessory manufacturer for specific details on your products.

### **What edition of Windows 11 will each device get after an institution upgrades its fleet?**

The upgrade to Windows 11 is for the same edition as you have on your Windows 10 device. Devices with Windows 10 Pro installed will be upgraded to Windows 11 Pro. Devices running Windows 10 Enterprise will upgrade to Windows 11 Enterprise. Windows 11 Pro is not offered in S mode, so you will need to switch out of S mode to upgrade.

### **What is the upgrade path from Windows 10 to Windows 11? My institution still has some Windows 7 devices. If they meet the hardware floor, can these be upgraded directly to Windows 11?**

Most devices available for purchase now will be upgradable to Windows 11. You will have the option to upgrade, clean install, or reimage Windows 10 devices to move to Windows 11. For Windows 7 devices that meet hardware requirements, you will need to clean install or reimage to go directly to Windows 11. Please view the [full minimum hardware requirements and specs](#).

### **What is the activation and provisioning process for my remote users? Is it the same as Windows 10?**

Windows 11 has been built on the same core as Windows 10, so you'll continue with the same experience you're accustomed to.

### **I use Windows Autopilot to provision devices for end users. Will Windows Autopilot be available for Windows 11?**

Yes, you will be able to use Windows Autopilot for Windows 11 devices.

### **As an IT pro, can I manage or remove certain new features in Windows 11 that I may not want in my install base or to expose to my users?**

Similar to previous versions of Windows, IT will have control over certain policies that will effectively manage or remove certain features. Windows 11 has been built on the same core as Windows 10, so you will continue with the same experience you're accustomed to on Windows 10.

### **How does Windows 11 impact my current deployment of Windows 10?**

Windows 11 and Windows 10 can be deployed, managed, and serviced in the same way, as both versions of Windows use the same deployment, management, and servicing tools. In terms of deployment, you can consider Windows 11 and Windows 10 as two different releases of the same OS.

### **Can I run both Windows 11 and Windows 10 in parallel? If so, do I use the same process and tools to manage both?**

Yes, Windows 11 is based on the same foundation as Windows 10, so they can coexist, and the same processes and tools are used to manage them.

### **Who do I contact if I have issues in upgrading to Windows 11 or general support questions?**

Visit [Microsoft Support](#) and contact your Lenovo sales representative.



Unlock the power of  
creativity and collaboration

## Additional resources

### Microsoft support

Hardware requirements and specs  
General upgrade support  
Windows 11 learning modules (forthcoming)  
PC Health Check app for compatibility  
Microsoft Education Journey and Assessment Tool  
Microsoft Education Center  
Remote Learning Resources

### Lenovo services and solutions

Lenovo Higher Education  
Lenovo Education Solutions  
Lenovo Managed Services  
Lenovo DaaS  
Lenovo Premier Support

 Windows 11

Unlock the power of  
creativity and collaboration



## Get ready for Windows 11 with Lenovo

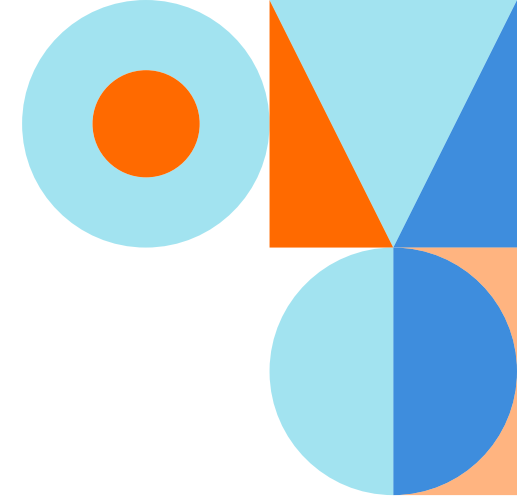
Keep your borderless campus humming regardless of where students are learning. Lenovo has the devices and solutions to reduce risk and downtime dramatically, and our experts make device deployments and updates secure and simple.

We can free up your IT team and deliver a smooth transition to Windows 11. **Speak with your Lenovo representative today.**

### SOURCES

- 1 Windows 11 customer pitch deck, 2021
- 2 Verizon, "2018 Data Breach Investigations Report," 11th Edition, April 2018
- 3 Digital Shadows (global digital securities firm), "From Exposure to Takeover: The 15 billion stolen credentials allowing account takeover," 2020

© Lenovo 2021. All rights reserved. v1.00 November 2021.



Lenovo