

ThinkVision T27hv

Smarter collaboration wherever you work from



CONFERENCE WITH CONFIDENCE AND CONFIDENTIALITY

Whether you call in from home, work in an open office or constantly shift your base of operations, ThinkVision T27hv-20 makes collaboration across distance easy for modern employees like you. That's because it puts every feature you need at your fingertips while taking commonly faced problems out of the picture. It's a pro at handling image and sound to give a world-class videoconferencing experience. On top of all the features you'd hope for, like 1080p IRRGB webcam, noise cancelling mics and powerful speakers, T27hv-20 comes packed with advanced features that put it in a class of its own. For instance, if you're in a shared space and concerned that prying eyes will peek at your confidential data, Smart Guard, powered by Glance by Mirametrix® Software¹, blurs your screen the moment you look or move away, or if it detects someone looking over your shoulder. And while you're mid-conference or just plain busy, the "ON AIR"-style Smart Traffic Light comes on to warn colleagues, or excited children, not to disturb you. To optimise energy efficiency, Smart Energy turns off your screen when it senses that you've moved away from your desk. And because ThinkVision T27hv-20 is a USB-C Hub monitor, it has superb connectivity: with a single cable, you can transfer data, video and even Ethernet signals all at once while powering devices up to 90W³, and even daisy chain a second monitor by DP out for greater productivity. Lenovo exclusive ThinkColour software¹ lets you effortlessly adjust advanced display settings using the mouse, enhancing efficiency and user experience.

Lenovo

FEATURES OF THINKVISION T27hv-20



A display of professionalism



Your business, secured and assured



All connectivity. No clutter.



Reduce fatigue. Boost comfort.

This 27-inch QHD In-Plane Switching panel monitor will make any content you throw onto it look its very best: from your colleagues' faces on the other side of the world to high-definition video content to gorgeous visuals that enliven your presentation. And it will sound just as good it looks. Two 3W front-facing speakers deliver videoconferencing colleagues' input with crystal-clear sound. Meanwhile, thanks to intelligent Synaptics AUDIOSMART™ technology, dual built-in microphones pick up only sounds that come from in front of the screen, while canceling sounds that come from the left and right. That way, your colleagues get to hear you, not your environment, letting everyone get on with business. Not only that. They'll see you better too because T27hv's integrated 1080p IRRGB camera can be adjusted to frame you at the perfect angle while you sit in the position that's most comfortable for you.

If you deal with sensitive data, sharing office space can have its trade-offs. That's why T27hv automatically blurs your screen the moment you look away or get up and leave your desk through Glance by Mirametrix® Software¹. In multi-screen setups, it can even sense when you're looking at the other screen and blurs your content to keep prying eyes at bay. And when you're not at your workstation, its Smart Energy technology senses this and dims your display, both saving energy and doubling down on your security. If you're based in an open-plan office, Smart Traffic Light warns others when you're videoconferencing or focusing on urgent tasks, so you don't have to deal with interruptions. To save you time and hassle logging on, and give you an added layer of security, you can log in fast with facial recognition without typing your password. And for extra peace of mind, the built-in webcam's physical privacy shutter actually closes over the camera when not in use, so you can operate in complete confidentiality.

Make your workday simpler and more efficient. With Lenovo's Smart Power technology dynamically controlling power throughout the monitor and the devices connected to it, you can eliminate messy power supply cables and improve your energy efficiency. Multitasking masters can broaden their horizons, literally, by daisy chaining a second monitor through the DP out port. And you can connect external storage, a keyboard or connect other mission-critical devices through multiple ports like HDMI 1.4, DP 1.2 and USB-A. If you suddenly have to switch to headphones on a call, they'll always be close at hand, hanging from the convenient headphones hook just above the combo Audio port, cutting out desktop clutter and precious seconds of awkward fumbling time.

Whether in the office or working from home, today, business means screen time. The TÜV Rheinland Eye Comfort-certified ThinkVision T27hv minimizes eye strain with Natural Low Blue Light technology without creating yellow-skewed images. Its Eyesafe² certified technology meets the strongest industry standards, reducing blue light while retaining the color accuracy. The monitor's built-in 1080p IRRGB camera adjusts its angle to frame you perfectly and comfortably. Moreover, the ThinkColour Software¹ lets you conveniently adjust display settings using the mouse in OSD, offering a better user experience. With an ergonomic stand that lifts the screen up to 135 mm, tilts between -5° and 35° front to back, pivots -90° to +90° and swivels -45° to +45° left to right, your whole display is always in the most comfortable spot for your individual needs. If you've ever struggled to plug in headphones mid-conference call due to the ports hidden on the back of the monitor, you'll appreciate T27hv's easily accessible, side-facing audio 3.5 mm jack for combined audio in and out.

ThinkVision T27hv-20

DISPLAY

Panel Size
27-inch

Screen Dimensions
608.78 mm x 355.13 mm

Panel Type
3-side NearEdgeless
In-Plane Switching

Active Area
596.74 mm x 335.67 mm

Backlight
WLED

Aspect Ratio
16:9

Resolution
2560 x 1440

Pixel Pitch
0.2331 x 0.2331 mm

Dot/Pixel Per Inch (DPI/PPI)
109

Viewing Angle (H x V @ CR 10:1)
178° / 178°

Response Time
4ms (extreme mode)
6ms (normal mode)

Refresh Rate
60 Hz

Brightness (typical)
350 cd/m²

Contrast Ratio (typical)
1000:1

Dynamic Contrast Ratio (typical)
3M:1

Color Gamut
99% sRGB

Color Support (typical)
16.7 Million

Color Depth
8-bit

Anti-glare
Yes

CONNECTIVITY

Video Signal
1 x USB Type-C² Gen1
(DP1.2 Alt Mode)
1 x HDMI 1.4
1 x DP 1.2
1 x DP 1.2 out

Audio Signal
1 x Audio combo (3.5 mm; in/out)

USB Hub
Yes

Ethernet
Yes(10M/100M/1000M)

USB Upstream
1 x USB 3.2 Gen1
(1 by USB Type-C Gen1)

USB Downstream
4 x USB 3.2 Gen1 (1 x BC1.2)

MULTI-MEDIA

Integrated Webcam
Yes (1080p, IRRGB camera)

Integrated Microphone
Yes

Integrated Speakers
Yes (2 x 3W)

SPECIAL FEATURES

Software
Lenovo ThinkColour (Lenovo Display Control Center)¹
Yes (Glance by Mirametrix®)¹

Smart Sensor
Yes

POWER

Power Consumption (Typ./Max)
25W / 148W

Power Consumption Sleep/Off Mode
0.5W

Power Consumption Switch-off Mode
0.3W

ENERGY STAR Power Consumption (P_{on}/E_{rec})
20.59W / 66.47kWh

Power Supply
Internal

USB Type-C power delivery (W)
Up to 90W³

Smart Power
Yes

Voltage Required
AC 100 to 240 V (50-60 Hz)

MECHANICAL

Tilt Angle (front/back)
-5° / 35°

Swivel Angle (left/right)
+45° / -45°

Lift (max range)
135 mm

Pivot
-90° / 90°

VESA Mount Capability
Yes (100 x 100 mm)

ThinkCentre M Series Tiny support
Yes, by Tiny/Nano monitor clamp II (PN: 4XHOZ42451) & Tiny VESA mount II (PN: 4XFON03161)

ThinkCentre M Series Nano support

Yes, by Tiny/Nano monitor clamp II (PN: 4XHOZ42451) & Nano VESA mount (PN: 4XFOV81630)

Kensington Lock Slot
Yes

Headphone Hook
Yes

Cable Management
Yes

Bezel Color
Raven Black

Bezel Width (side)
2.0 mm

Bezel Width (top/bottom)
2.0 / 50.07 mm

DIMENSION

Size Packed (D x H x W, mm/inch)
159.00 x 515.00 x 860.00 mm
6.26 x 20.28 x 33.86 inches

Size Unpacked w/ Stand (D x H x W, mm/inch) (lowest position)
208.00 x 473.60 x 613.60 mm
8.19 x 18.65 x 24.16 inches

Size Unpacked w/ Stand (D x H x W, mm/inch) (highest position)
208.00 x 608.60 x 613.60 mm
8.19 x 23.96 x 24.16 inches

Size Unpacked w/o Stand (head only) (D x H x W, mm/inch)
45.50 x 412.60 x 613.60 mm
1.79 x 16.24 x 24.16 inches

Weight Packed (kg/lbs.)
10.55kg / 23.26 lbs

Weight Unpacked (kg/lbs.)
7.35kg / 16.20 lbs.

Weight (monitor head only) (kg/lbs.)
4.85kg / 10.69 lbs.

WHAT'S IN THE BOX

Monitor with stand
1 x Power cable (1.8 m)
1 x USB Type-C to Type-C cable (1.8 m)
1 x DP cable (1.8m) (NA only)
1 x HDMI cable (1.8m) (PRC only)
1 x USB Type-C to Type-A cable (1.8m) (NA only)
Quick setup guide

CERTIFICATION

ENERGY STAR Rating
8.0

CCC
Yes

TCO
8.0

TCO Edge
2.0

EPEAT
Gold

RoHS (EU 2002/95/EC)
Yes

Windows Certification
Windows 7, Windows 10

China Energy Efficiency Standard
Tier 1

TÜV Rheinland Eye Comfort
Yes

TÜV Rheinland Low Blue Light
Yes

Eyesafe Display Certification
Yes



Lenovo

¹This software can only be used with Windows 10

²USB Type-C[®] and USB-C[®] are registered trademarks of USB Implementers Forum

³Listed as maximum capacity of power delivery. Actual capacity of power delivery may vary depending upon devices connected or monitor configuration, and may decline with downstream USB ports connected or higher brightness setting

Depending on many factors such as the processing capability of peripheral devices, file attributes, and other factors related to system configuration and operating environments, the actual transfer rate using the various USB connectors on this device will vary and is typically slower than the data rates as defined by the respective USB specifications: - 5 Gbit/s for USB 3.1 Gen1; 10 Gbit/s for USB 3.1 Gen2 & 20 Gbit/s for USB 3.2. Enhanced Sign-in Security is not supported.

© 2021 Lenovo. All rights reserved. These products are available while supplies last. Prices shown are subject to change without notice. For any questions concerning price, please contact your Lenovo Account Executive. Lenovo is not responsible for photographic or typographic errors. Warranty: For a copy of applicable warranties, write to: Warranty Information, 500 Park Offices Drive, RTP, NC 27709, Attn: Dept. ZPYA/B600. Lenovo makes no representation or warranty regarding third-party products or services. Trademarks: Lenovo, the Lenovo logo, Rescue and Recovery, ThinkPad, ThinkCentre, ThinkStation, ThinkVantage, and ThinkVision are trademarks or registered trademarks of Lenovo. Microsoft, Windows, and Vista are registered trademarks of Microsoft Corporation. Intel, the Intel logo, Intel Inside, Intel Core, and Core Inside are trademarks of Intel Corporation in the U.S. and/or other countries. Other company, product, and service names may be trademarks or service marks of others.

Specifications may vary depending upon region.

THINKVISION T22v

ACHIEVE MORE WITH UNINTERRUPTED COLLABORATION

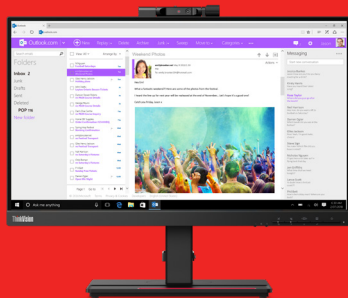
Lenovo

PURPOSEFULLY DESIGNED FOR EVERYDAY BUSINESS

Redefine collaboration with the purposefully designed 21.5-inch ThinkVision T22v-20. Designated as one of the Most Efficient ENERGY STAR certified products in 2020, it reduces your carbon footprint while lowering power consumption. A built-in camera, Full-HD display, microphone, and speakers take video conferencing to a whole new level and easy to scale. The integrated IR Camera in conjunction with Windows Hello facial recognition ensures users can safely login without a password. In addition, the ThinkShutter allows users to cover their camera and the Auto Alarm feature notifies users when the camera or microphone is in use—safeguarding user confidentiality and privacy. Lenovo exclusive ThinkColour software¹ lets you effortlessly adjust advanced display settings using the mouse, enhancing efficiency and user experience.

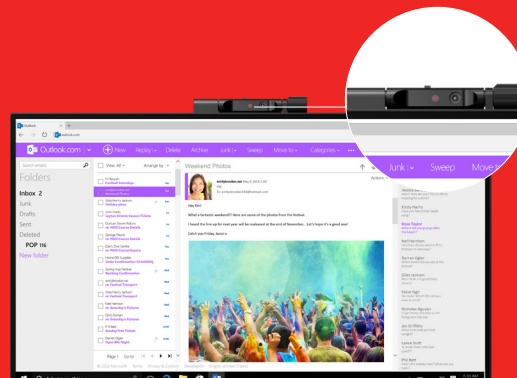


FEATURES OF THINKVISION T22v-20



Effortless Collaboration

Enjoy seamless collaboration on the ThinkVision T22v-20, equipped with an FHD camera, dual-array microphones, and stereo speakers that facilitate an enhanced VoIP meeting experience. The 1920 x 1080 screen offers exceptional visual clarity for effective meetings and presentations.



Uncompromised Security

Privacy is safeguarded with the ThinkShutter that physically covers the camera when not in use. For enhanced privacy, a smart auto-alarm function notifies you if the camera or microphone is in use. The IR camera coupled with Windows Hello ensures secure facial recognition for quick, secure logins.



Amplified Productivity

An angle-adjustable camera, inbuilt with smart face-tracking technology automatically adjusts the user's face to the center of the screen, optimizing the display for a perfect VoIP meeting. Dedicated speaker and microphone control keys make it easy to toggle audio and video during meetings. Increased lift range and tilt angle on this monitor allow you to adjust it to a comfortable position.

ThinkVision T22v-20

DISPLAY

Panel Size
21.5-inch

Screen Dimensions
476.06 mm x 267.79 mm

Panel Type
3-side NearEdgeless
In-Plane Switching

Backlight
WLED

Aspect Ratio
16:9

Resolution
1920 x 1080

Pixel Pitch
0.2479 x 0.2479 mm

Dot/Pixel Per Inch (DPI/PPI)
102

Viewing Angle (H x V @ CR 10:1)
178° / 178°

Response Time
4ms (Extreme Mode)
6ms (Normal Mode)

Refresh Rate
60 Hz

Brightness (typical)
250 cd/m²

Brightness (peak)
250 cd/m²

Contrast Ratio (typical)
1000:1

Dynamic Contrast Ratio (typical)
3M:1

*This software can only be used with Windows 10

Color Gamut
72% NTSC (CIE 1931)

Color Support (typical)
16.7 Million

Anti-glare
Yes

CONNECTIVITY

Video Signal
1 x HDMI 1.4
1 x DP 1.2
1 x VGA

Audio Signal
1 x Audio Combo
(3.5 mm; in/out)

USB Hub
Yes

USB Upstream
1 x USB 3.2 Gen1

USB Downstream
2 x USB 3.2 Gen1 (1 x BC 1.2)

MULTI-MEDIA

Integrated Webcam
Yes (1080p, IRRGB camera)

Integrated Microphone
Yes

Integrated Speakers
Yes (2 x 3W)

SPECIAL FEATURES

Software
Lenovo ThinkColour (Lenovo Display Control Center)¹

POWER

Power Consumption (Typ./Max)
13W / 43W

Power Consumption Sleep/Off Mode
< 0.5W

Power Consumption Switch-off Mode
< 0.3W

ENERGY STAR Power Consumption (P_{on}/E_{TEC})
10.75W / 33.81kWh

Power Supply
Internal

Voltage Required
AC 100 to 240 V (50-60 Hz)

MECHANICAL

Tilt Angle (front/back)
-5° / 35°

Swivel Angle (left/right)
+45° / -45°

Lift (max. range)
150 mm

Pivot
-90° / 90°

VESA Mount Capability
Yes (100 x 100 mm)

ThinkCentre M Series Tiny support
Yes (sold separately)

Kensington Lock Slot
Yes

Cable Management
Yes

Bezel Color
Raven Black

Bezel Width (side)
1.8 mm

Bezel Width (top/bottom)
1.8 / 22.0 mm

DIMENSION

Size Packed (D x H x W, mm/inch)
390.0 x 187.0 x 577.0 mm
15.35 x 7.36 x 22.72 inches

Size Unpacked w/ Stand (D x H x W, mm/inch) (lowest position)
205.0 x 413.0 x 489.3 mm
8.07 x 16.26 x 19.26 inches

Size Unpacked w/ Stand (D x H x W, mm/inch) (highest position)
205.0 x 563.0 x 489.3 mm
8.07 x 22.17 x 19.26 inches

Size Unpacked w/o Stand (head only) (D x H x W, mm/inch)
48.3 x 314.4 x 489.3 mm
1.90 x 12.38 x 19.26 inches

Min. Distance from Table to Panel (lowest pixel at bottom of screen, mm)
121.7 mm

Max. Distance from Table to Panel (highest pixel at top of screen, mm)
539.4 mm

Weight Packed (kg/lbs.)
7.22kg / 15.92 lbs.

Weight Unpacked (kg/lbs.)
5.49kg / 12.10 lbs.

Weight (monitor head only) (kg/lbs.)
3.03kg / 6.68 lbs.

Full Container Load (40' STD/20' STD)
1188/550 units

WHAT'S IN THE BOX

Monitor with stand
1 x Power cable (1.8 m)
1 x DP cable (1.8 m)
1 x USB Type-A to Type-B cable (1.8 m)
Quick setup guide

CERTIFICATION

ENERGY STAR Rating
8.0

CCC
Yes

TCO
8.0

TCO Edge
2.0

EPEAT
Gold

RoHS (EU 2002/95/EC)
Yes

Windows Certification
Yes

China Energy Efficiency Standard
Tier 1

TÜV Rheinland Eye Comfort
Yes



Depending on many factors such as the processing capability of peripheral devices, file attributes, and other factors related to system configuration and operating environments, the actual transfer rate using the various USB connectors on this device will vary and is typically slower than the data rates as defined by the respective USB specifications: - 5 Gbit/s for USB 3.1 Gen1; 10 Gbit/s for USB 3.1 Gen2 & 20 Gbit/s for USB 3.2. Enhanced Sign-in Security is not supported.

© 2021 Lenovo. All rights reserved. These products are available while supplies last. Prices shown are subject to change without notice. For any questions concerning price, please contact your Lenovo Account Executive. Lenovo is not responsible for photographic or typographic errors. Warranty: For a copy of applicable warranties, write to: Warranty Information, 500 Park Offices Drive, RTP, NC 27709, Attn: Dept. ZPYA/B600. Lenovo makes no representation or warranty regarding third-party products or services. Trademarks: Lenovo, the Lenovo logo, Rescue and Recovery, ThinkPad, ThinkCentre, ThinkStation, ThinkVantage, and ThinkVision are trademarks or registered trademarks of Lenovo. Microsoft, Windows, and Vista are registered trademarks of Microsoft Corporation. Intel, the Intel logo, Intel Inside, Intel Core, and Core Inside are trademarks of Intel Corporation in the U.S. and/or other countries. Other company, product, and service names may be trademarks or service marks of others.

Specifications may vary depending upon region.



THINKVISION T24v

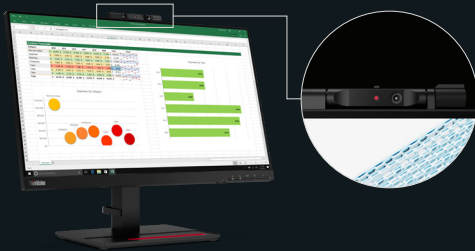
SMART PERFORMANCE.
EFFECTIVE COLLABORATION.

Lenovo

DESIGNED FOR MODERN WORKSPACES

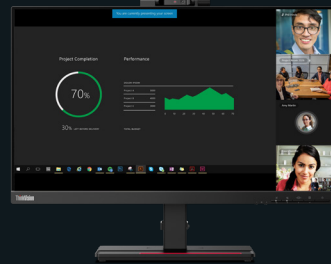
Built to empower the next-generation workforce, the ThinkVision T24v-20 redefines workplace collaboration with its smart, innovative features. This 23.8-inch monitor has an IR camera, which along with Windows Hello and enterprise-grade security, ensures instant and secure login. The camera is equipped with a physical shutter that works as added protection to user privacy. Dual microphones with noise cancellation function and speakers offer an enhanced VoIP meeting experience. Create a strong first impression with every presentation on its Full-HD, 3-sided NearEdgeless display that delivers brilliant clarity and outstanding visuals. Its ergonomic features offer comfort and convenience for you to work efficiently. Designated as one of the Most Efficient ENERGY STAR certified products in 2020, it reduces your carbon footprint while lowering power consumption. Lenovo exclusive ThinkColour software¹ lets you effortlessly adjust advanced display settings using the mouse, enhancing efficiency and user experience.

FEATURES OF THINKVISION T24v-20



Smarter and Personalized Security

Safety, security, and speed are the need of the hour and the IR camera, in conjunction with Windows Hello facial recognition, gives you exactly that. No need to remember passwords, or save credentials—just log in using your face. Additionally, the ThinkShutter allows you to cover your camera and the auto-alarm feature notifies you if the camera or microphone is in use, offering uncompromised privacy.



Effective Collaboration

Virtual meetings will now be a breeze. The T24v's superior screen format, picture quality, and user functionality ensure that your video calls have top-notch clarity, crystal clear sound, and uninterrupted connectivity—thanks to the 2MP Full-HD camera, dual array microphones, and stereo speakers. A viewing angle of 178° makes it easy to collaborate as multiple users can view on-screen content from anywhere in the room.



Intuitive User Experience

Make your meetings more comfortable and productive. An angle-adjustable camera and an ergonomic stand allow you to adjust the monitor to match your working style. Smart face-tracking technology automatically adjusts your face in the center of the screen, optimizing the display for a perfect VoIP meeting. With an ergonomic design and dedicated control keys, the T24v makes for a smart choice for any business.

ThinkVision T24v-20

DISPLAY

Panel Size
23.8-inch

Screen Dimensions
527.04 mm x 296.46 mm

Panel Type
3-side NearEdgeless
In-Plane Switching

Backlight
WLED

Aspect Ratio
16:9

Resolution
1920 x 1080

Pixel Pitch
0.2745 x 0.2745 mm

Dot/Pixel Per Inch (DPI/PPI)
93

Viewing Angle (H x V @ CR 10:1)
178° / 178°

Response Time
4ms (Extreme Mode)
6ms (Normal Mode)

Refresh Rate
60 Hz

Brightness (typical)
250 cd/m²

Brightness (peak)
250 cd/m²

Contrast Ratio (typical)
1000:1

Dynamic Contrast Ratio (typical)
3M:1

Color Gamut
72% NTSC (CIE 1931)

Color Support (typical)
16.7 Million

Anti-glare
Yes

CONNECTIVITY

Video Signal
1 x HDMI 1.4
1 x DP 1.2
1 x VGA

Audio Signal
1 x Audio Combo (3.5 mm; in/out)

USB Hub
Yes

USB Upstream
1 X USB 3.2 Gen1

USB Downstream
2 x USB 3.2 Gen1 (1 x BC1.2)

MULTI-MEDIA

Integrated Webcam
Yes (1080p, IRRGB camera)

Integrated Microphone
Yes

Integrated Speakers
Yes (2 x 3W)

SPECIAL FEATURES

Software
Lenovo ThinkColour (Lenovo
Display Control Center)¹

POWER

Power Consumption (Typ./Max)
13W / 44W

Power Consumption Sleep/Off Mode
< 0.5W

Power Consumption Switch-off Mode
< 0.3W

ENERGY STAR Power Consumption (P_{on}/E_{TEC})
11.36W / 35.68kWh

Power Supply
Internal

Voltage Required
AC 100 to 240 V (50-60 Hz)

MECHANICAL

Tilt Angle (front/back)
-5° / 35°

Swivel Angle (left/right)
+45° / -45°

Lift (max range)
150 mm

Pivot
-90° / 90°

VESA Mount Capability
Yes (100 x 100 mm)

ThinkCentre M Series Tiny support
Yes (sold separately)

Kensington Lock Slot
Yes

Cable Management
Yes

Bezel Color
Raven Black

Bezel Width (side)
1.8 mm

Bezel Width (top/bottom)
1.8 / 22.0 mm

DIMENSION

Size Packed (D x H x W, mm/inch)
418.0 x 187.0 x 644.0 mm
16.46 x 7.36 x 25.35 inches

Size Unpacked w/ Stand (D x H x W, mm/inch) (lowest position)
205.0 x 434.0 x 539.8 mm
8.07 x 17.0 x 21.2 inches

Size Unpacked w/ Stand (D x H x W, mm/inch) (highest position)
205.0 x 584.0 x 539.8 mm
8.07 x 23.0 x 21.2 inches

Size Unpacked w/o Stand (head only) (D x H x W, mm/inch)
48.35 x 344.3 x 539.8 mm
1.9 x 13.55 x 21.25 inches

Min. Distance from Table to Panel (lowest pixel at bottom of screen, mm)
114.1 mm

Max. Distance from Table to Panel (highest pixel at top of screen, mm)
560.56 mm

Weight Packed (kg/lbs.)
7.86kg / 17.33 lbs.

Weight Unpacked (kg/lbs.)
7.86kg / 17.33 lbs.

Weight (monitor head only) (kg/lbs.)
3.48kg / 7.67 lbs.

Full Container Load (40' STD / 20' STD)
1012/440 units

WHAT'S IN THE BOX

Monitor with stand
1 x Power cable (1.8 m)
1 x DP cable (1.8 m)
1 x USB Type-A to Type-B cable (1.8 m)
Quick setup guide

CERTIFICATION

ENERGY STAR Rating
8.0

CCC
Yes

TCO
8.0

TCO Edge
2.0

EPEAT
Gold

RoHS (EU 2002/95/EC)
Yes

Windows Certification
Windows 7, Windows 10

China Energy Efficiency Standard
Tier 1

TÜV Rheinland Eye Comfort
Yes



¹This software can only be used with Windows 10

Depending on many factors such as the processing capability of peripheral devices, file attributes, and other factors related to system configuration and operating environments, the actual transfer rate using the various USB connectors on this device will vary and is typically slower than the data rates as defined by the respective USB specifications: - 5 Gbit/s for USB 3.1 Gen1; 10 Gbit/s for USB 3.1 Gen2 & 20 Gbit/s for USB 3.2. Enhanced Sign-in Security is not supported.

© 2021 Lenovo. All rights reserved. These products are available while supplies last. Prices shown are subject to change without notice. For any questions concerning price, please contact your Lenovo Account Executive. Lenovo is not responsible for photographic or typographic errors. Warranty: For a copy of applicable warranties, write to: Warranty Information, 500 Park Offices Drive, RTP, NC 27709, Attn: Dept. ZPYA/B600. Lenovo makes no representation or warranty regarding third-party products or services. Trademarks: Lenovo, the Lenovo logo, Rescue and Recovery, ThinkPad, ThinkCentre, ThinkStation, ThinkVantage, and ThinkVision are trademarks or registered trademarks of Lenovo. Microsoft, Windows, and Vista are registered trademarks of Microsoft Corporation. Intel, the Intel logo, Intel Inside, Intel Core, and Core Inside are trademarks of Intel Corporation in the U.S. and/or other countries. Other company, product, and service names may be trademarks or service marks of others.

Specifications may vary depending upon region.

ThinkVision MC50 Monitor Webcam

CLARITY FOR YOUR BUSINESS VISION

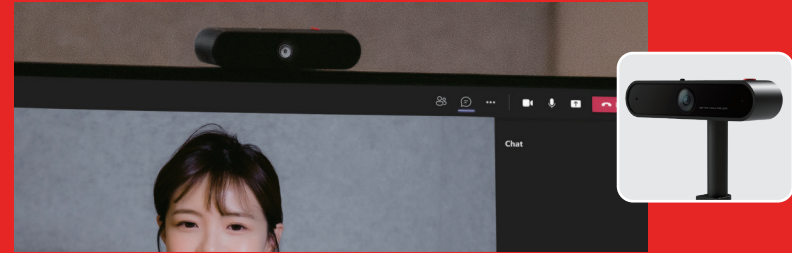
THE PLUG-AND-PLAY WEBCAM WITH SMART SECURITY

Add clarity to your business vision with Lenovo ThinkVision MC50 Monitor Webcam. This feature-rich webcam adds easy functionality to your daily operations when paired with compatible monitors¹. Capturing 1080p RGB video images with its 1/2.9-inch RGB sensor, MC50 delivers clear images for all your videoconferencing needs. Its wide 90° field of view fits your content comfortably in the frame, while the cam swivels -45° to 225° and tilts +/-30° up and down. Thanks to Lenovo's proprietary Smart Traffic Light, which automatically turns on a tiny light when you are engaged in a meeting, and a physical camera shutter, you can say goodbye to privacy concerns. MC50's built-in dual microphones with noise cancellation provide clear audio that you can count on, captured up to 2 meters away.

¹ MC50 is compatible with selected ThinkVision P & T models.



FEATURES OF THINKVISION MC50 MONITOR WEBCAM



Visually smarter

ThinkVision MC50 Monitor Webcam makes doing business smarter and smoother. Its 1080p resolution RGB camera captures Full-HD detail for when your task calls for clarity. If you're videoconferencing from home or a tidy corner of a café, the MC50 projects real, quality video. Let others know when your audio or video is live, thanks to Lenovo's patented Smart Traffic Light; a red light illuminates whenever the camera accesses an image or sound. Enjoy a comfortable, flexible setup by tilting up to +/-30° and swiveling the camera -45° to 225° to be in the position for your needs. Capture a wide 90° view, perfect for larger conferencing setups.



Audibly clearer

When it comes to Videoconferencing, the sound is every bit as critical as the image. MC50's built-in dual microphones work in tandem to actively cancel noise so that your voice comes across loud and clear every time while background sounds are silenced. The camera's microphones accurately pick up your voice within a range of 2 meters but filter out unwelcome distractions.



Simply safer

With MC50, peace-of-mind goes hand-in-hand with plug-and-play. When you need privacy, the webcam's physical shutter closes in front of the lens so others can't see you. Its other key security feature is its anti-theft locking functionality that anchors the camera to your monitor and can be removed with a physical key. It's easy to connect MC50 to your monitor through a simple USB connection with a one-step plug-in.

ThinkVision MC50 Monitor Webcam

RGB RESOLUTION
FHD (1920 x 1080)

LENS TYPE
RGB

RGB SENSOR SIZE
1/2.9 inches

CAMERA FOV
DFOV 90°

MICROPHONE
Two Built-in Microphone

VOICE PICK-UP DISTANCE
2 m

NOISE CANCELLATION
Yes

PRIVACY SHUTTER
Yes (built-in)

SHOOTING ANGLE
Tilt : +/-30°
Pan : -45° / 225°

CABLE LENGTH
0.7 m

I/O PORTS
USB-A

COMPATIBLE WITH
Windows 7/Windows 10
macOS 10.14 or later
Chrome OS 85.0.4181.3 or later
Compatible with Popular UC Platforms
(Microsoft Teams, Amazon Chime, Google Hangouts,
Cisco Webex, Zoom, BlueJeans, etc.)

COMPATIBLE MONITORS
P40w-20 | P34w-20 | P32p-20 | P27u-20 | P27h-20 | P27h-28 |
P27q-20 | P24h-20 | P24h-2L | P24q-20 | T34w-20 | T32p-20 |
T32h-20 | T27h-20 | T27h-2L | T27q-20 | T24h-20 |
T24m-20 | T24t-20

DIMENSION (L x D x H)
mm : 116 x 44.6 x 170
inches : 4.57" x 1.76" x 6.7"

SALIENT FEATURES

Camera
1080p RGB Camera with 1/2.9 inches sensor size for excellent resolution and clarity.

Microphone
Built-in Dual Microphone, with noise cancellation for convenient and clear communication.

Privacy Shutter
Physical Shutter to address your privacy needs.

Smart Traffic Light
Automatic Smart Light that turns on when you start a meeting.



INSTALLATION GUIDE

Locks securely with your ThinkVision Monitor



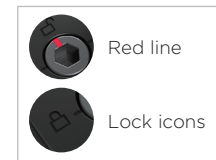
Attach it to the grill on the monitor's backside.



Twist the 'lock' with the 'Locking Key' to fasten securely.



The webcam is locked when the red line aligns with either of the lock icons, on the left or right.



Lenovo ThinkVision VoIP Stack

Modernize collaboration
with a smarter solution

EFFORTLESS VIRTUAL MEETINGS FOR EVERYDAY PRODUCTIVITY

Take virtual meetings to a whole new level with the Lenovo ThinkVision VoIP Stack that is built to deliver superior collaborative experiences for your teams, no matter where you work from. This new modular stack incorporates neat, linear design features that seamlessly fit in with the ambience of your workspace, enhancing its ergonomics. Modern remote workers who engage in frequent video conferencing can make the most of their collaborative opportunities with privacy controls. This stack design integrates the ThinkVision MC60 Monitor Webcam and ThinkVision MS30 Monitor Soundbar, making adapting to everyday hybrid working a breeze. Stay in control of your workday with a host of adjustability features—perfect camera angles, comfortable height, superior sound quality, and advanced security features. The whole VoIP solution combines built-in smarter features with ThinkColour software support and a flexible, clutter-free design to help elevate your productivity.



Lenovo

PURPOSEFUL FEATURES FOR NEXT-LEVEL MEETING EXPERIENCES



Make any place your workspace

Experience flexibility at work with the ThinkVision VoIP Stack. The plug-and-play VoIP solution is made to suit your remote collaboration needs. Get a streamlined, inspiring work environment with instant starts to your meetings and stay at your productive best, anytime, anywhere.



Clutter-free connectivity with ThinkVision Monitors

Say goodbye to the clutter and the mess of multiple cables. The new modular stack connects directly with your ThinkVision monitor USB-A port, so getting into a quick meeting is easy, without the rush of having to tidy up.

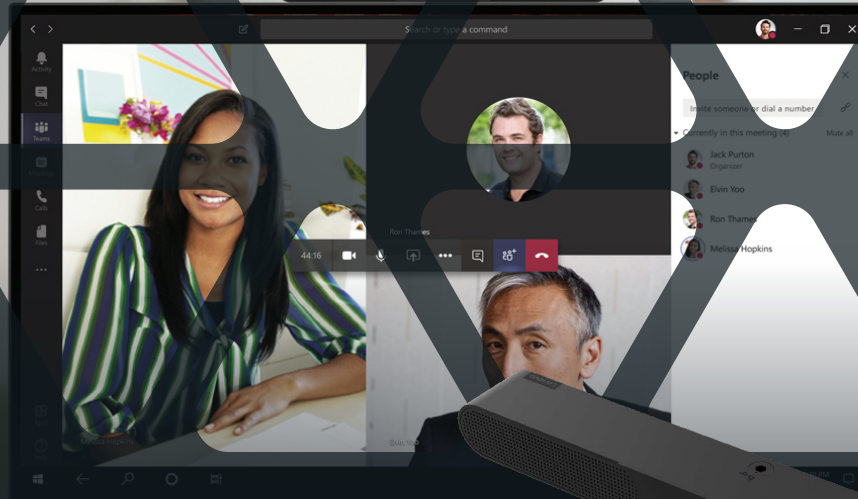


Adjustable features that support a busy day

Get the flexibility to customize your Lenovo ThinkVision VoIP Stack based on your work requirement. Independently use the ThinkVision MC60 Monitor Webcam for video calls or the ThinkVision MS30 Monitor Soundbar for audio-only meetings. Alternatively, combine the camera and speaker to get a holistic VoIP meeting solution. Adjust the height of the ThinkVision VoIP stack with monitor for comfort and ease of use.

ThinkVision MS30 Monitor Soundbar

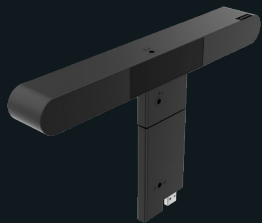
Uncompromised
audio quality for
ThinkVision monitors



The ThinkVision MS30 Monitor Soundbar delivers crystal clear and quality sound directly from the front 2 x 2W speakers, so your virtual meetings and classroom experiences are always rich. Its sleek, modular design with less than 30 mm in height is free of cable clutter and pairs perfectly with your ThinkVision P and T Series monitors. It has a Security Lock that keeps it safe from physical theft once connected. Lenovo ThinkColour software enables convenient display features for a stress-free experience.



SMART AUDIO FOR WORLD-CLASS COLLABORATION



Superior sound for effective meetings

The ThinkVision MS30 Monitor Soundbar offers an economical way for a high-quality speaker to do what it was designed for—deliver perfect sound. Simple front delivery allows you to listen well, as compared with speakers that face away or the ones that are mounted sideways. The front-facing 2 x 2W sound experience is perfect for virtual meetings and online classroom sessions.



Go cableless with ThinkVision P and T Series displays^①

The ThinkVision MS30 Monitor Soundbar is the perfect partner for your ThinkVision monitor. Its sleek, cableless design keeps your work area clutter-free, good-looking, and always ready for collaboration. In-built anti-theft functionality with Security Lock helps ensure your system integrity remains intact.



Innovative and easy-to-use audio settings

The ThinkVision MS30 Monitor Soundbar speaker is extremely simple to operate and is designed for compatibility with your ThinkVision P and T Series^① monitors. Lenovo's ThinkColour software incorporates display features, enabling easy-to-adjust audio output quality for effortless collaborative sessions.

^①Compatible with selected ThinkVision P and T Monitors

ThinkVision MC60 Monitor Webcam

Amplified video output
for everyday meetings



Lenovo

Take your virtual meetings to the next level. The ThinkVision MC60 Monitor Webcam is an intuitive webcam that offers the most stunning video quality—full 1080p resolution designed to fit on your monitor seamlessly. Capture your best perspectives with different FOV angles of 65/78/90 degrees, autofocus features, and smart controls for seamless collaboration. The ThinkVision MC60 Monitor Webcam is designed to cancel out ambient noise with directional signal transmission technology that optimizes the microphone between private and conference modes to give a tailored audio experience. Its built-in, high-sensitivity dual mics capture clear voice inputs from up to two meters away. Advanced security features such as the privacy shutter and anti-theft functionality ensure privacy protection when you need it the most.

COLLABORATIVE PERSPECTIVES FOR THE NEW WORKPLACE



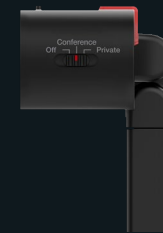
Superior resolution. Thoughtful design.

The ThinkVision MC60 Monitor Webcam allows you to select your best camera angle with different FOV angles of 65/78/90 degrees and adjustable height settings that help you capture your best views and still maintain your privacy. The 1080p IR+RGB camera and large 1/2.9-inch sensor size sensor combined with smart functionality controls to enhance the appearance of your face and adjust the lighting to help you always look your best. Moreover, its compact form fits super comfortably into any workspace. It does away with cable clutter while its lift expansion structure fits perfectly into your monitor's USB-A slot.



Smart appearance. Efficient meetings.

Waste no time logging into sessions, thanks to Windows Hello secure login. Look your sharpest with the Autofocus camera. Cancel ambient noise with the latest noise-filtering technology, so your audience hears every word you say without distortion. Further enhance your meetings with Smart Traffic Light that warns people around you that you are on a call, so they won't interrupt you.



Worry-free, secure collaboration

Stay in control of your contribution to meetings with the handy Audio Mode Switch, so your audience only hears what you want to say to them. Your privacy is in your hands, thanks to the webcam's physical shutter that physically blinds your camera—especially helpful when you are working remotely. Additionally, the anti-theft functionality helps secure the camera with a physical key.

Technical Specifications

ThinkVision MS30 Monitor Soundbar

Connectivity to Monitor

USB-A

Security Lock

Yes

Lift Expansion

Yes

Software

Lenovo ThinkColour (Lenovo Display Control Center*)

Support OS

Windows 10 and above

Power Output

2 x 2W

Frequency Range

140 Hz - 20 kHz

Product Color

Raven Black

Size w/o Stand

(D x H x W, mm / inch)

34.5 x 27 x 256 mm

1.35 x 1.06 x 10.07 inch

Size w/ Stand

(D x H x W, mm / inch)

34.5 x 152 x 256 mm

1.35 x 5.98 x 10.07 inch

Weight w/o Stand

111.2 g

Weight w/ Stand

174.8 g

What's in the box

1 x MC30 Monitor Soundbar

1 x Stand

1 x Key

1 x QSG

1 x Warranty Booklet

Compatible Monitors for MS30/MC60

P32p-30 | T32p-30

P27h-30 | T27p-30

P27q-30 | T32h-30

| T27h-30

| T27i-30

*This software can only be used with Windows 10 & Windows 11.

ThinkVision MC60 Monitor Webcam

Connectivity to Monitor

USB-A

Resolution

FHD (1920 x 1080)

Record Resolution & Frame Rate

640 x 480@ 30fps

1280 x 720@ 30fps

1920 x 1080@ 30fps

Lens Type

IR+RGB

RGB Sensor Size

1/2.9 inches

RGB DFOV

65° / 78° / 90°

Digital Zoom

4x

Focus Type

Autofocus

Shooting Angle

Tilt -25°/+25°

Integrated Microphone

2 x built-in mics

Noise Cancellation

Yes

Software

Lenovo ThinkColour (Lenovo Display Control Center*)

Support OS

Windows 10 and above

Special Features

Privacy shutter: physically cover webcam lens

Microphone switch:

Off/Conference/Private

Privacy Shutter

Yes (built-in)

Tilt Control

Yes

Product Color

Raven Black

Packed Dimension

(L x D x H, mm / inch)

172 x 100 x 55 mm

6.77 x 3.93 x 2.16 inch

Packed Weight

211.2 g

Size w/o Stand

(D x H x W, mm / inch)

41.5 x 28.2 x 123.2 mm

1.63 x 1.11 x 4.85 inch

Size w/ Stand

(D x H x W, mm / inch)

41.5 x 152 x 123.2 mm

1.63 x 5.98 x 4.85 inch

Weight w/o Stand

73.2 g

Weight w/ Stand

136.8 g

What's in the box

1 x MC60 Monitor Webcam

1 x Stand

1 x Key

1 x QSG

1 x Warranty booklet

Depending on many factors such as the processing capability of peripheral devices, file attributes, and other factors related to system configuration and operating environments, the actual transfer rate using the various USB connectors on this device will vary and is typically slower than the data rates as defined by the respective USB specifications: - 5 Gbit/s for USB 3.1 Gen1; 10 Gbit/s for USB 3.1 Gen2 & 20 Gbit/s for USB 3.2.

©2022 Lenovo. All rights reserved. These products are available while supplies last. Prices shown are subject to change without notice. For any questions concerning price, please contact your Lenovo Account Executive. Lenovo is not responsible for photographic or typographic errors. Warranty: For a copy of applicable warranties, write to: Warranty Information, 500 Park Offices Drive, RTP, NC 27709, Attn: Dept. ZPYA/B600. Lenovo makes no representation or warranty regarding third-party products or services. Trademarks: Lenovo, the Lenovo logo, Rescue and Recovery, ThinkPad, ThinkCentre, ThinkStation, ThinkVantage, and ThinkVision are trademarks or registered trademarks of Lenovo. Microsoft, Windows, and Vista are registered trademarks of Microsoft Corporation. Intel, the Intel logo, Intel Inside, Intel Core, and Core Inside are trademarks of Intel Corporation in the U.S. and/or other countries. Other company, product, and service names may be trademarks or service marks of others.

Specifications may vary depending upon region.