



Smarter  
technology  
for all

Lenovo

# Take your business further with smarter technology solutions

Lenovo Solutions for SMB

Lenovo ThinkBook 14 G6

Lenovo ThinkPad X1 Yoga Gen 8



Built for Business with  
Intel vPro® Platform.



Lenovo recommends  
Windows 11 Pro for Business.





Lenovo ThinkPad X1 Yoga Gen 8

# The right technology makes all the difference

For today’s SMBs, there’s no shortage of big challenges—from uncertain market conditions and changing competitive landscapes to the constant need to attract and retain top talent.

And no matter what business you’re in, having the right technology solutions in place is critical to achieving your goals and capitalizing on new opportunities.

But knowing what to choose, how to implement, and when to introduce new technology is challenging. You need a trusted partner to help navigate these decisions and deliver the value of your technology investments.

**You need technology that just works—technology that enables you to focus on what you do best, get more done, and grow your business.**

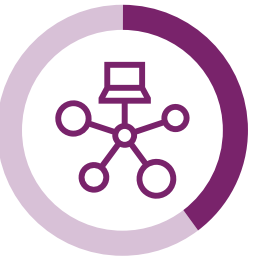
In the following pages, you’ll find technology options curated from the industry’s broadest portfolio of solutions—hardware, software, and services—customized to support growth for your business today and tomorrow.

## SMBs move forward with tech innovation



25%

By 2025, 25% of SMBs will shift half of their core workloads to the cloud to drive business agility<sup>1</sup>



40%

By 2027, total budgets dedicated to IT investments and connectivity services will increase by 40%<sup>1</sup>



# Prepare your workforce for maximum efficiency, no matter where they're working

Business happens everywhere. Depending on the type of work you're doing, you can have employees onsite in an office, hybrid workers moving between home and office, or employees who are entirely remote. Or you may have any combination of employee working locations.

**What matters is ensuring everyone has the right tools and support to work the way they want.**





## Versatile efficiency for hybrid workers

For a workforce that spends time in the office and time working remotely, you need versatile, portable devices that seamlessly connect from anywhere.

Lenovo ThinkPad X1 Yoga Gen 8

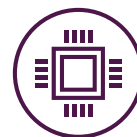
## All day battery life

Power through the most demanding work with all-day battery life and rapid charge technology.

## Engineered for durability

The tough aluminum chassis is designed to withstand the rigors of hybrid work, and MIL-SPEC testing ensures the ThinkPad X1 Yoga is resistant to vibration, dust, humidity, and more.

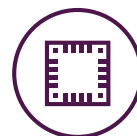
The **Lenovo ThinkPad X1 Yoga** with Windows 11 Pro features a 2-in-1 design with a 360° hinge switching between laptop, tablet, and tent modes, no matter where your “desk” may be. Touch style fingerprint reader, integrated into the power button, locks the computer down, so only the designated user can access the device. Includes BIOS Security and power-on password for access.



**Processor**—Up to Intel vPro®, an Intel® Evo™ Design with 13th Gen Intel® Core™ i7



**Storage**—Up to 2TB Gen 4 performance PCIe NVMe SSD



**Memory**—Up to 64GB LPDDR5



**Graphics**—Intel® Iris® Xe graphics

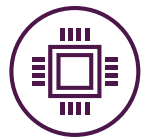




# Mobile efficiency made for today's workforce

For a workforce that's constantly on the move—meeting clients, traveling for business, or creating content—devices need to meet mobile demands.

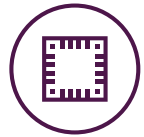
The **Lenovo ThinkBook 14 G6** keeps you online with the latest superfast Wi-Fi technology even in crowded public places. Ample USB ports ensure you can easily connect to other devices. An HDMI port lets you connect to a monitor for dual displays and there's also an ethernet port for cable connections.



**Processor**—Intel 13th Gen Intel® Core™ processors, up to 6 P-core and up to 8 E-cores



**Graphics**—Integrated Intel® Iris® Xe graphics



**Memory**—16 GB DDR5-5200MHz (SODIMM)—(2 x 8 GB)



**Storage**—2 M.2 PCIe NVMe SSD with up to 1TB

## Work better, faster and smoother

The ThinkBook 14 G6 is a game changing laptop. Business professionals can run resource-intensive applications and handle complex data, efficiently. Optimized for ultra-fast connectivity, it provides effortless access to cloud applications and seamless video conferencing on the move.

## Light and secure

Thin and light, its ideal for on-the-move working. With a 90% screen to body ratio you can see more on screen and a bigger touch pad and 'soft landing' keyboard enables faster and smoother typing. A fingerprint reader eliminates the need to remember complex passwords and allows login with simple finger touch.



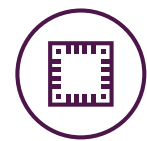
Lenovo ThinkBook 14 G6



# More power for business in a lighter form factor

Fusing the portability of a laptop and the performance of a workstation, the lightweight **Lenovo ThinkPad P Series** workstation tackles the most compute-intensive workflows on the go.

With professional grade graphics and powerful, multi core processors, Lenovo Mobile Workstations ensures best in class reliability even when you're away from the office.



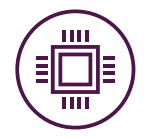
**Memory**—Up to 64GB DDR5



**Graphics**—Up to NVIDIA RTX™ A5500 16GB VRAM



**Storage**—Up to 8TB M.2 PCIe Gen4 NVMe Performance SSD



**Processor**—Intel vPro® 13th Gen Intel® Core™ processors



Lenovo ThinkPad P1 Gen 6

## Deep security

Security is deeply integrated across hardware, firmware, and software. Incorporating Lenovo's ThinkShield options along with the security features of the Microsoft operating system, the ThinkPad P Series provides the highest level of protection that today's SMBs need.

## Proven strength

The ThinkPad P Series mobile workstations, with professional grade graphics and powerful multi core processors, meet the most rigorous MIL SPEC standards, ensuring they're reliable and durable. They are also ISV-certified, so you can be confident that they will more than meet the demands of your business and your industry.

In particular the ThinkPad P16 is a power-packed mobile workstation built for the ultimate professional user. Featuring the latest Intel vPro® with 13th Gen Intel® Core™ HX series processors and unmatched graphics, with support for up to NVIDIA RTX™ 5000 Ada generation, this mobile workstation is built for those who demand the highest level of power and performance while on-the-go.



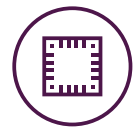
# Small form factor, big benefits for your office

Versatile desktop solutions can fill a wide range of needs for SMBs, from back-office operations to customer kiosks and powering digital signage.

The **Lenovo ThinkCentre neo 50s** small form factor (SFF) packs a lot of power in a space-saving business PC. A breeze to set up anywhere, the ThinkCentre neo 50s features multiple front and back USB ports for peripherals and a range of video connection options—from VGA to DisplayPort to HDMI.



Lenovo Thinkcentre neo 50s



**Memory**—up to 64GB DDR4 3200Mhz



**Graphics**—Integrated Intel UHD graphics 730/770 (depends on CPU)



**Storage**—up to 2 drives, 1x3.5" + 1x M.2 2280 SSD

## Cool under pressure

With our Intelligent Cooling Engine (ICE) 6.0, system performance is optimized based on your workload. This enables superb energy efficiency with over 40kWh per unit per year in power savings.

## Built to grow with your business

Easy to upgrade and expand, the ThinkCentre neo 50s desktop can be customized to meet your computing needs today and tomorrow. It's compact but still has space, including PCIe slots, for you to easily add extra graphics or storage.

## Lenovo Asset Recovery Services

When Lenovo devices, and other multi-brand devices, are at end-of-life they are securely and environmentally friendly recycled. This protects your business from data leaks and compliance risks when assets are disposed of. It also returns fair market value (FVM) to you for assets that are re-marketable.



# Efficiency-enhancing peripherals

Whether it's in the office or the home office, maintaining peak efficiency requires an environment suited to each employee's working style.



## On-the-go work made easy

The **Lenovo ThinkVision M14t** is an ultra-slim and light, touch screen, portable monitor designed to keep up with the way you work. It provides you with an extra screen when you need it and an intuitive 10-point touchscreen ensures you have the freedom to sketch, design and annotate with an active digital pen.

- Screen size—14.0"
- Display resolution—1920 x 1080
- Brightness—300 cd/m<sup>2</sup>
- Aspect ratio—16:9
- Contrast ratio—700:1

## Expand the potential of in-office productivity

With a 5MP camera, two built-in 5W speakers, VoIP functionality, and two noise canceling microphones, the **Lenovo ThinkVision T27hv-30** monitor makes collaboration seamless. The large screen size and QHD resolution provide plenty of real estate for work documents, and there's a DP-out port for easy daisy-chaining.

- Screen size—27.0"
- Display resolution—2560 x 1440
- Brightness—300 cd/m<sup>2</sup>
- Aspect ratio—16:9
- Contrast ratio—1000:1
- Backlight—WLED

## Impress with a tablet purpose built for professionals

Whether you're looking to improve SMBs efficiencies, deliver slicker client experiences, or take work on the go, the **Lenovo Tab M10** is a perfect fit. It's slim, stylish, and durable with blazing-fast Wi-Fi and enterprise-grade audio.

- Processor—MediaTek® P22T (4 x 2.3GHz + 4 x 1.8GHz)
- Operating system—Android™ 10
- Display—10.1" HD (1280 x 800) IPS, touchscreen, 400 cd/m<sup>2</sup>
- Memory—Up to 4GB LPDDR4X (soldered)



Lenovo ThinkVision M14t

Lenovo ThinkVision T27hv-30



# Productivity boosters for your business

Keeping your team at peak efficiency takes more than industry-leading hardware. The right applications, services, and support take the burden off internal support resources and let you focus on productive tasks.



## Microsoft 365

No two businesses are the same. And the tools your employees need to succeed are unique to your goals and challenges. That's why Microsoft 365 through Lenovo offers a wide array of tools, apps, and benefits to support your business from anywhere.

We also offer an array of managed services for M365 users that can streamline every aspect of their experience.



**Lenovo Support for M365**—Expert M365 assistance from IT admins to end users. With two tiers available, Professional and Advanced Support, pay for exactly the support you need and none of what you don't.



**Lenovo Backup for M365**—Get comprehensive, automated data backup and managed recovery, and rest easy knowing our experts can always retrieve lost data so your business keeps running.



**Lenovo Migration for M365**—Transform your SMB for a digital hybrid work experience. Lenovo's Migration Services for M365 can easily and expertly move your data from legacy platforms to M365 tenants.

## Optimize PC performance with Lenovo Smart Performance Services

Behind the scenes, Lenovo Smart Performance conducts automatic PC performance monitoring and repairs, resolving common issues. Turn on Smart Performance for quicker PC startups, improved performance and stability, and lightning-fast application launches.



Check out our [productivity brochure](#) to learn more.



# Peace of mind with Lenovo Services

From managing day-to-day issues with end-user devices to ensuring they're all patched and updated against the latest cyberthreats, keeping your technology safe and secure can feel like a full-time job. Let Lenovo take the burden.

## Exceptional support

**Lenovo Premier Support Plus** provides users with 24/7/365 direct access to Lenovo experts. Get a single point of contact for end-to-end case management and priority service delivery and repair parts. Use a Premier Support Plus phone number, live chat, or an e-ticket.

Next level with Lenovo Premier Support Plus, uses AI proactive and predictive services to identify and resolve issues before they become problems.

## End-to-end protection for your SMB

**Lenovo ThinkShield** delivers built-in adaptable security solutions—such as remote management, self-healing BIOS, secure wipe, device usage and health, and firmware security—to defend against software and hardware attacks by ensuring firmware integrity and providing real-time alerts for any attack attempts.

In addition to the built-in features that expand on Windows 11 Pro security elements, the ThinkShield brings best-of-breed solutions together to ensure end-to-end security for your employees no matter where they're working.



**ThinkShield Threat Isolation powered by BUFFERZONE** includes patented containment technology that isolates threats before they can harm your organization, making a safe environment for email, web, and file management.



**Absolute Endpoint Resilience** software provides device fleet visibility, control, and management to help ensure your defense stays secure and runs smoothly.



**ThinkShield Data Defense powered by Cignet** protects against ransomware attacks and ensures data availability and integrity.



**ThinkShield Hardware Defense powered by Sepio** protects against rogue or compromised devices, hardware implants, unauthorized device connections, malicious peripherals, or manipulated firmware on devices.

**Download our [security brochure](#)**





Lenovo ThinkBook 14 G6

# A smarter approach to simplifying your technology

As a service solutions are an increasingly popular way for SMBs to acquire and manage the critical tools they use to conduct business every day.

**Lenovo TruScale Device as a Service (TruScale DaaS)** gives you access to the latest devices and Lenovo's entire portfolio without upfront capital investment by leveraging a pay-as-you-go model.

- Every aspect of the technology lifecycle is covered, from provisioning to deployment, support, management, and secure, environmental disposal at end of life.
- Scale seamlessly as your needs change.
- Provide faster refreshes for your team.
- Free up your IT resources for more strategic initiatives.

Plus, Lenovo TruScale DaaS can deliver up to a **35% potential reduction** in device-related IT costs<sup>2</sup> and a **50% faster** time to productivity.<sup>3</sup>



# Data center solutions engineered for SMBs

When it comes to meeting your data center needs—whether on-premises, in the cloud, or hybrid—Lenovo has the solutions and services to support your needs with enterprise-grade performance.

Spend less time focused on your infrastructure with cost-efficient, flexible server and storage solutions designed to meet the ever-changing landscape of your growing organization. Lenovo can help design and implement your IT framework for the future so you can be more competitive today and tomorrow.



**Growth support**—Increase business agility and quickly adapt to market changes by leveraging a reliable, open infrastructure. Lenovo solutions, comprised of industry-leading servers and storage, integrated software, and support services, evolve with your business needs and provide reliable uptime.

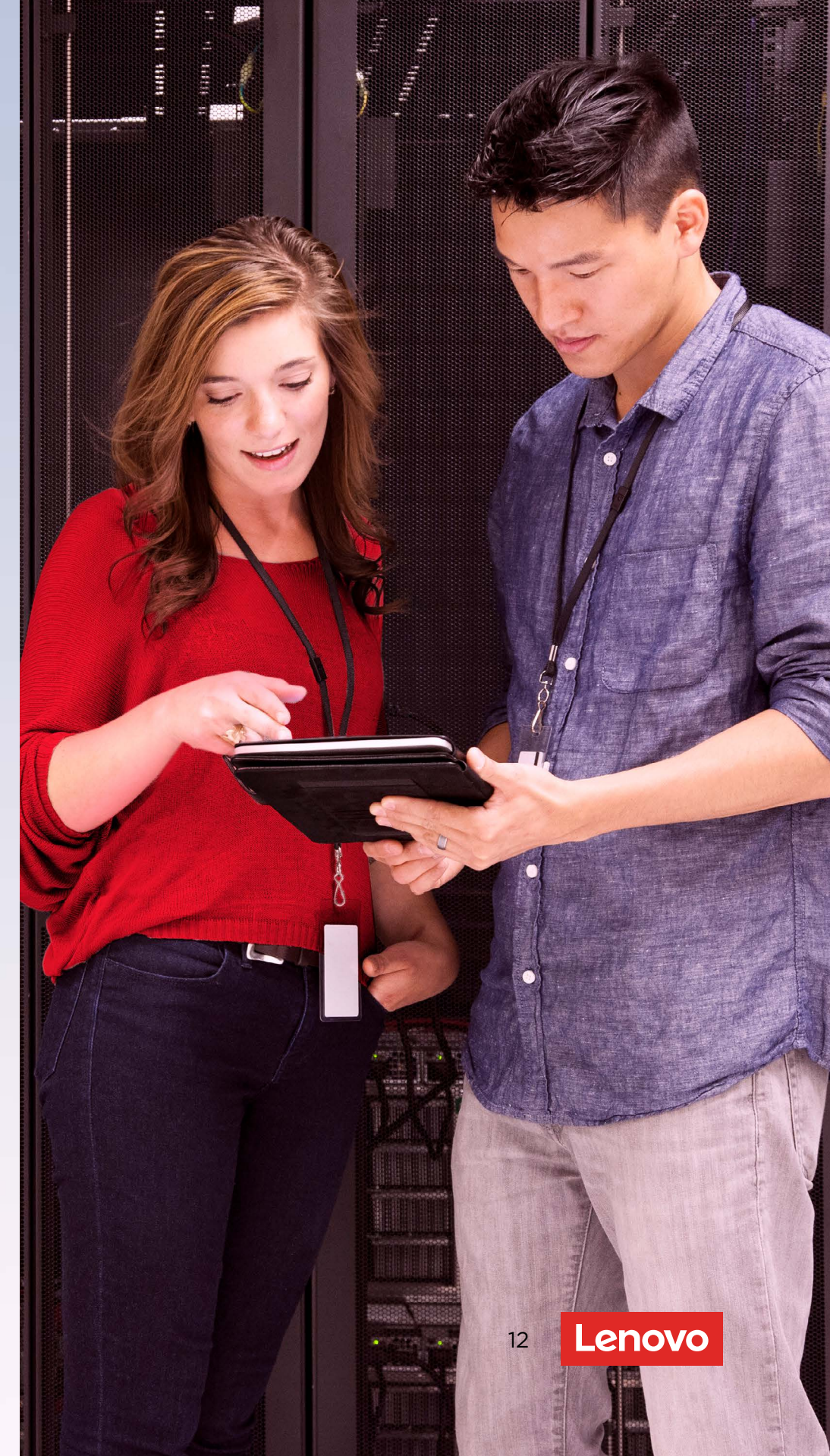


**Easy IT**—Maximize your business productivity by automating your infrastructure. Optimize your IT with infrastructure solutions that self-heal and manage without dedicated IT resource requirements.



**Protection**—Proactively anticipate, prepare for, and adapt to adverse events to keep your business operating effectively. Realize fewer disruptions from security breaks, failures, and data losses with proven Lenovo infrastructure solutions that provide real-time insights and tamper protection options.

Lenovo's ThinkSystem servers have consistently provided top reliability among all x86 servers for nine consecutive years.





# Ready for a partner who shares your vision for success?

A smarter technology partner helps businesses grow when times are good—and stay resilient when they’re not. As a trusted partner, we’ll work with your SMBs on creating digital solutions that increase efficiency, productivity, and security, helping you grow your bottom line while delivering an outstanding employee experience.

**Contact your Lenovo SMB expert today and see what we can achieve together.**

**Sources**

- 1 Software Advice, “Trend Report: These Are the 5 Most Important Tech Trends for SMBs in 2023,” January 2023
- 2 Lenovo TruScale DaaS ROI Tool. This is a sample representation of Lenovo customer data assuming a 3-year replacement cycle with a modern management approach at an average DaaS monthly price, device repair rate of 2%, and IT resource annual salary of \$70,000 USD. The above does not constitute a guarantee of savings. Actual customer savings may vary. All purchases of DaaS are subject to conclusion of a formal contract.
- 3 Based on reduced steps of deployment with Lenovo UEM, per the UEM customer-facing deck.

©2023, Lenovo Group Limited. All rights reserved.

All offers subject to availability. Lenovo reserves the right to alter product offerings, prices, specifications or availability at any time without notice. Models pictured are for illustration purpose only. Lenovo is not responsible for typographic or photographic errors. Information advertised has no contractual effect. Lenovo, include other Lenovo marks referenced—ThinkPad, ThinkCentre, ThinkStation, ThinkVantage, and ThinkVision are trademarks of Lenovo. Microsoft, Windows and Vista are registered trademarks of Microsoft Corporation. Ultrabook, Celeron, Celeron Inside, Core Inside, Intel, Intel Logo, Intel Atom, Intel Atom Inside, Intel Core, Intel Inside, Intel Inside Logo, Intel vPro, Itanium, Itanium Inside, Pentium, Pentium Inside, vPro Inside, Xeon, Xeon Phi, Xeon Inside, and Intel Optane are trademarks of Intel Corporation or its subsidiaries in the U.S. and/or other countries. All other trademarks are the property of their respective owners.



Built for Business with Intel vPro® Platform.



Windows 11

Lenovo recommends Windows 11 Pro for Business.

Smarter  
technology  
for all

