



Lenovo Deployment Services

# Smarter is faster Day One productivity on your own terms

## ProvisionNow

When 76% of IT decision-makers face a talent shortage, and 50% of the team spends too much time managing end-user devices.<sup>1</sup> You need efficiency and productivity. Lenovo has the solution right from the manufacturing facility — ProvisionNow is an innovative offering of bundled services that minimize in-house tech effort, provide end users with devices that are ready-to-go on Day One, and enable quick replacement of company-issued devices lost or damaged in the field.

Learn more at [www.lenovo.com/ProvisionNow](http://www.lenovo.com/ProvisionNow)

Smarter  
technology  
for all

Lenovo

# The hybrid workplace

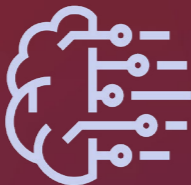
Remote work models and decentralized workforces are both here to stay. IT teams need fast, low-touch provisioning options and end users need devices they can use to communicate productively from Day One. It can be a challenge to allocate the internal resources needed for the related IT demands, especially the numerous touchpoints from refresh to retirement.

Increase productivity by choosing a **ProvisionNow** bundle of services that streamlines company-issued device configuration, deployment, image management, and cloud recovery. Each Kit includes factory-based device set up as well as user-centric and cloud-based IT services that streamline in-house IT workload and maximize Day One productivity.



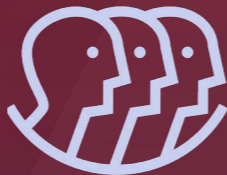
### IT decision-makers

Optimize your IT infrastructure while reducing the amount of time your team(s) expend on provisioning and recovery.



### CIOs

Offload the mundane tasks so in-house IT team(s) can focus on initiatives that increase your company's bottom line.



### HR executives

Attract and retain top talent by providing ready-to-use devices for immediate engagement.

On average, imaging a device for a new or existing user can take up to **4 hours** for IT department personnel.<sup>2</sup>

On top of the ongoing shortage of qualified IT pros, an improving economic picture, and inflation pressures **could push salaries up by 8%.**<sup>3</sup>

**Prioritize the workload and let Lenovo help straight out of factory floor.**

## Trust the expertise behind the scenes

Lenovo Imaging Technology Center (ITC)

**81** engineers

**6** dedicated labs

# ProvisionNow for your unique needs

**ProvisionNow** service bundles are designed to offload IT team workload and free up time to focus on strategic IT projects. No matter how robust your in-house IT knowledge or dedicated support, these service bundles can offer time and resource savings.

**ProvisionNow** service bundles include expertly selected Lenovo services to meet your most pressing, and time-consuming, provisioning needs.

**Factory-based configuration** - Lenovo loads the corporate image and configures BIOS settings to your company's exact security and network needs before any device leaves Global Device Provisioning Services. This is unique to **ProvisionNow** bundles.

	ProvisionNow	ProvisionNow
Target Organization	For SMBs with between 25 - 1,000 devices	For enterprises with more than 1,000 devices
Image Preload	✓	
Image Preload with Custom Content (5 apps)		✓
Image Management (LCD) Lenovo enables your in-house IT team to remotely manage and recover your custom image using the Lenovo Cloud Deploy (LCD) platform. This ensures end-users swiftly recover from hardware and software failures.		✓
Custom BIOS Lenovo configures the BIOS settings to your company's exact security and network needs before devices leave Global Device Provisioning Services.		✓
Enhanced Asset Tag Lenovo affixes these information-rich, tamper-resistant asset tags to your devices (or stores the tag in the system's BIOS). This streamlines inventory management and deters theft.	✓	✓
CO <sub>2</sub> Offset Lenovo, through an Environmental Partner, compensates the CO <sub>2</sub> emissions associated with your device or fleet. You can track and confirm the offset contribution.		✓
Cloud Recovery Customer image is hosted in Lenovo Cloud for quick access (3 years)	✓	✓
Microsoft Autopilot Registration Lenovo registers the device for Autopilot with Microsoft on your behalf. This saves you from collecting the hardware identity and uploading it yourself.	✓	✓
Autopilot Registration Data (4KHH) enables your IT team(s) to quickly and easily de-register and re-register company-issued devices in InTune for Autopilot whenever they want.	✓	✓

# The ProvisionNow

1. Choose a right-sized ProvisionNow service bundle.
2. Lenovo builds to specs, enabling and testing every service and setting.
3. Lenovo ships fully configured devices direct from the factory to the HQ.
4. Deploy new or replacement devices with speed and ease.

## Ready for use

Let Lenovo do the prep work while you focus on more valuable work. This process guarantees in-house IT teams do not have to waste time making sure imaging is installed and applications are loaded. It also ensures end users are productive as soon as possible.

## Scalable

From small businesses to large enterprises, there is a scalable ProvisionNow service bundle for you, whether you have in-house IT support or not. Lenovo leverages years of laptop deployment and management expertise to provide the right-fit tools you need to support your hybrid workforce on Day One and beyond.

## Time and resource saving

Forrester has estimated that the cost of effort for imaging a device in-house is around \$108. ProvisionNow not only help you save the cost, it also comes with recovery and on-going (3 year) image management capabilities so your IT team is free to focus on more strategic projects in-house.

# Smarter provisioning for the hybrid workplace.

Talk to your Lenovo Representative to see how ProvisionNow can help you quickly issue or replace employee devices with minimal IT team involvement.

WWServices\_ProvisionNow\_brochure\_091423\_MT

(1) TechRepublic, "3 out of 4 teams are facing critical skill gaps," <https://www.techrepublic.com/article/3-out-of-4-it-teams-are-facing-critical-skill-gaps/>  
"Microsoft Fast Study: Zero Touch Deployment," <https://www.data3.com/knowledge-centre/blog/microsoft-fast-study-zero-touch-deployment/>

(2) <https://www.connection.com/-/media/pdfs/brands/m/microsoft/moderndevicemanagement/windows-autopilot-business-case-studies-forrester.pdf>

(3) <https://www.computerworld.com/article/3684748/raises-for-some-it-pros-could-jump-8-in-2023-exceeding-inflation.html#:~:text=The%20on-going%20shortage%20of%20qualified,from%20business%20consultancy%20Janco%20Associates.>

Lenovo and the Lenovo logo are trademarks or registered trademarks of Lenovo. Other company, product and service names may be trademarks or service marks of others. © **Lenovo 2023. All rights reserved.**

Lenovo