



Smarter  
technology  
for all

Lenovo

## Lenovo ThinkSmart Core Kit for Zoom Rooms

Lenovo makes it easy to incorporate smarter collaboration technology into meeting rooms of all sizes with the Lenovo ThinkSmart Core Full Room Kit for Zoom Rooms.

These purpose-built, modular room kit solutions start with Lenovo ThinkSmart Core, a compute that is powered by 11<sup>th</sup> Gen Intel® Core™ vPro™ processors with Intel® Iris® Xe graphics for optimized business productivity and collaboration. Lenovo ThinkSmart Core is certified and preloaded with Zoom Rooms to help employees connect, share, and collaborate seamlessly and securely from wherever they may be working. In addition to being bundled with one year of Smart Collaboration Professional Services Deploy and Maintain, ThinkSmart Core also comes with remote manageability through Lenovo's custom-built, preloaded ThinkSmart Manager software.<sup>1</sup>

With multiple options, Lenovo ThinkSmart Core Kits are designed to fit within any infrastructure and budget considerations. For spaces with existing A/V technology, choose Lenovo ThinkSmart Core with Controller, which includes either the Lenovo ThinkSmart Controller or Lenovo IP Controller, giving you one-touch join to keep your meetings efficient and productive. For a complete solution in one box, choose Lenovo ThinkSmart Core Full Room Kit, which also includes Lenovo ThinkSmart Cam and Lenovo ThinkSmart Bar or an upgrade to ThinkSmart Bar 180 for a premium audio and video experience.



<sup>1</sup>Lenovo ThinkSmart Manager comes pre-loaded on all ThinkSmart Core devices. Lenovo ThinkSmart Manager has two levels: Basic and Premium. Premium is included with your ThinkSmart Core purchase for one year. You can choose to continue service for an additional cost.



# Lenovo ThinkSmart Core Full Room Kit

## Lenovo ThinkSmart Core



### EASY TO CHOOSE

When it comes to computing power, Lenovo ThinkSmart Core is the smarter choice. Powered by 11<sup>th</sup> Gen Intel® Core™ vPro™ processors and built on the Intel® vPro® platform with Intel® Iris® Xe graphics, this formidable computer provides hardware-enhanced security, modern manageability, and improved stability. Built on the trusted Windows 11 IoT Enterprise operating system, Lenovo ThinkSmart Core is a flexible, modular device with ports to support multiple audio and visual accessories. It also has a tidy integrated cable management design.



### EASY TO MANAGE

IT teams can monitor, manage, and troubleshoot Lenovo ThinkSmart Core remotely using pre-loaded Lenovo ThinkSmart Manager software.<sup>1</sup> Lenovo ThinkSmart Core also comes bundled with one year of Smart Collaboration Professional Services Deploy and Maintain for personalized support during setup and ongoing maintenance.



### EASY TO SUPPORT

Included with purchase for the first three years, Lenovo Premier Support manages routine support tasks, freeing up IT to focus on strategic efforts. Boost end-user productivity and limit downtime with direct access to elite Lenovo engineers who provide unscripted, advanced hardware and software support.

## Controllers



### LENOVO THINKSMART CONTROLLER

The Lenovo ThinkSmart Controller is an intuitive 10.1-inch, 10-point touch display with the familiar Zoom Rooms interface that allows users to initiate and control the meeting, share content, and communicate easily. And no more smudges clouding the view, thanks to the anti-glare and anti-fingerprint display.



### LENOVO IP CONTROLLER

The Lenovo IP Controller addresses the growing demand for HDMI on table with no lag, as well as PoE connectivity. The sleek 10.1-inch, 10-point touch display with the familiar Zoom Rooms interface allows for simple, effective collaboration. Plus, because it's wall mountable and can be installed up to 100 meters from the compute, the Lenovo IP Controller creates a clean aesthetic ideal for the modern workplace.

zoom

<sup>1</sup>Lenovo ThinkSmart Manager comes pre-loaded on all Lenovo ThinkSmart Core devices. Lenovo ThinkSmart Manager has two levels: Basic and Premium. Premium is included with your Lenovo ThinkSmart Core purchase for one year. You can choose to continue service for an additional cost.

Lenovo

# Lenovo ThinkSmart Core Full Room Kit

Includes Lenovo ThinkSmart Core, choice of controller, and choice of the following audiovisual components:

## Lenovo ThinkSmart Bar 180



### PREMIUM SIGHT & SOUND

- All-in-one experience, one-cable install
- Unique 180° field of view with 3-camera system for wall-to-wall room coverage
- High-fidelity sound, so every participant can hear and be heard

### IMMERSIVE EXPERIENCE

- Brings whiteboard content to life, simultaneously displaying whiteboard content and in-room participants
- Identifies voices of up to 10 speakers for intelligent speech features
- Precision voice detection

### NATURAL ENGAGEMENT

- Impressive AI features to focus on speakers and manage transitions
- Customizes virtual meeting space with defined room boundaries
- Keeps everyone optimally framed

## Lenovo ThinkSmart Cam



### CAPTURES REALITY

- Wide field of view
- High resolution and frame rates to eliminate distracting lag and distortion
- Vivid colors, bright images, and high contrast

### EAGER TO LEARN

- Lenovo's first AI smart camera
- Encourages productivity and interactivity
- Follows the conversation with features<sup>1</sup> like active speaker tracking and whiteboard awareness

### FITS RIGHT IN

- Compact, lightweight design
- Compatible with Zoom Rooms
- Tabletop use or mountable to wall or TV

## Lenovo ThinkSmart Bar



### LISTEN UP

- Stereo speakers
- Four built-in mics with 180-degree wide-angle coverage
- Integrated DSP noise cancellation

### BUILT FOR SCALE

- Speaker and integrated mic range of 8.5m
- Accommodates small rooms and huddle spaces
- Add one or two optional mic pods for larger boardrooms

### SIMPLE SETUP

- Compatible with Zoom Rooms
- Can be used on tabletop
- Mountable on wall or to TV

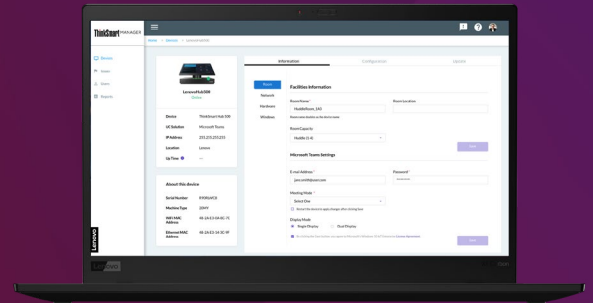


<sup>1</sup> AI features are controlled via Lenovo ThinkSmart Manager, which is included for the first year with the purchase of Lenovo ThinkSmart Core. Whiteboard awareness is available at ship support.  
<sup>2</sup> Lenovo ThinkSmart Manager comes pre-loaded on all Lenovo ThinkSmart Core devices. Lenovo ThinkSmart Manager has two levels: Basic and Premium. Premium is included with your Lenovo ThinkSmart Core purchase for one year. You can choose to continue service for an additional cost.

# Lenovo ThinkSmart Manager<sup>1</sup>

By leveraging the remote management capabilities of Intel® vPro® combined with Intel® Active Management Technology (AMT), this proprietary console provides your IT team with the ability to deploy, monitor, and troubleshoot Lenovo ThinkSmart devices from a single interface, regardless of the state or location of the devices.

- Leverage a single console to remotely deploy, manage, configure, update, and resolve issues
- See real-time status by device and receive live at-a-glance issues lists
- Perform bulk configuration and bulk restarts
- Generate reports to keep tabs on device issues and trends
- Take advantage of elevated security options
- Includes one year of Lenovo ThinkSmart Manager Premium



## Smart Collaboration Professional Services



### DEPLOY

Included for the first year, Lenovo ensures your Lenovo ThinkSmart devices function optimally through virtual deployment installation and integration support.



### MAINTAIN

Included in the first year, we follow up with remote check-ins and assist with ongoing security updates to take the stress out of device maintenance.



### ASSESS<sup>2</sup>

Lenovo is here to help identify any issues that could sidetrack your deployment by providing a detailed assessment of potential red flags and a follow-up report.



### TRAIN<sup>2</sup>

Lenovo helps instruct all your audiences—IT and AV support teams, end users, and executives—on how to fully take advantage of your new technology.



### DESIGN<sup>2</sup>

Lenovo evaluates and categorizes your meeting spaces by infrastructure and experience needs to design a “room standard” that includes hardware, software, and service recommendations.



### ONSITE<sup>2</sup>

Lenovo provides white glove treatment through a dedicated, on-site specialist who can perform any of the above services, including complete physical set up, installation, configuration, and device troubleshooting.

zoom

<sup>1</sup> Lenovo ThinkSmart Manager comes pre-loaded on all Lenovo ThinkSmart Core devices. Lenovo ThinkSmart Manager has two levels: Basic and Premium. Premium is included with your Lenovo ThinkSmart Core purchase for one year. You can choose to continue service for an additional cost.

<sup>2</sup> Optional

# Lenovo ThinkSmart Core Full Room Kit

## Product Specifications

### Lenovo ThinkSmart Core performance

#### PROCESSOR

Intel® Core™ i5-1145G7E IoTG vPro® Processor

#### OPERATING SYSTEM

Windows® 11 IoT Enterprise SAC

#### MEMORY

16 GB (Dual-Channel) DDR4 3200MHz

#### STORAGE

256GB PCIe TLC SSD

#### GRAPHICS

Intel® Iris® X® Graphics

### security

TPM 2.0

Kensington™ MiniSaver lock slot

Integrated Cable Management

### connectivity

1x HDMI Ingest, 2x HDMI-Out, 1x RJ45 Gigabit Ethernet,  
2x USB-A 3.2 Gen 2, 1x USB-A 3.2 Gen 1, 1x USB-C 3.2 Gen 2,  
1x USB-C 3.2 Gen 1 for Lenovo ThinkSmart Controller,  
1x Standard Think Power

#### WIFI

WLAN 802.11 AC (2x2)

Bluetooth® Low Energy (LE) 5.0

### design

#### DIMENSIONS (W X D X H)

226 x 200 x 37.5 mm/8.90 x 7.87 x 1.48 in

#### WEIGHT

1.12 kg/2.47 lbs.

### manageability

ThinkSmart Manager

### warranty

3-year Premier Support

### ThinkSmart-Start

1-year deploy

1-year maintenance

1-year ThinkSmart Manager Premium

### Controller

#### PORTS

Lenovo ThinkSmart Controller

1x USB-C 2.0, 1x 3.5mm headphone

Lenovo IP Controller

PoE, HDMI (in)

#### DISPLAY

10.1" 10-point touch

30° and 60° rotatable

Antiglare, anti-fingerprint

#### RESOLUTION

1280 x 800 (<340nits)

16:10 aspect ratio

#### SECURITY

Kensington™ MiniSaver Lock Slot

### Lenovo ThinkSmart Controller and Lenovo IP Controller



# Lenovo ThinkSmart Core Full Room Kit

## Product Specifications

### Lenovo ThinkSmart Bar 180

#### camera

**NUMBER OF CAMERAS**

3

**FIELD OF VISION**

180° horizontal, 54° vertical

**ASPECT RATIO**

3840 x 1080

**RESOLUTION SUPPORT**

13 megapixels

Panoramic 4K

30fps

**ZOOM**

6x lossless digital zoom

Intelligent Zoom

#### audio

**SPEAKERS**

2x speakers, 2x tweeters

Stereo audio out

Speaker frequency range: 80Hz-20kHz

**MICROPHONES**

8 beamforming array microphones

Sensitivity: -37dBFS

Microphone frequency range 100Hz-8kHz

#### other

**BUTTONS**

Power, mute, Bluetooth, volume

**MOUNTING**

TV mounting brackets included

**DIMENSIONS (W X H X D)**

650 x 80 x 125 mm/25.6 x 3.1 x 4.9 in

**WEIGHT**

2.2 kg/4.85 lb

**CONNECTIVITY**

Audio Jack, USB-C Supports 2.0 and 3.0, Ethernet (RJ45), Bluetooth®

**MOUNTING**

Standalone (tabletop stand available)

Wall mount (included)

### Lenovo ThinkSmart Cam

**FIELD OF VIEW**

100° Horizontal FoV

68° Vertical FoV

125° Diagonal FoV

**ASPECT RATIO**

16:9

**SUPPORT RESOLUTIONS**

*USB 3.2 Gen 1 Cable*

4K at 30fps, 1080p at 60/30fps, 720p at 60/30fps, 360p at 60/30fps

*USB 2.0 Cable*

1080p at 30fps, 720p at 30fps, 360p at 30fps

**IMAGE OUTPUT FORMAT**

MPEG, H.264, YUV

**MOUNTING**

Standalone (tabletop), Wall and TV mounting options

### Lenovo ThinkSmart Bar

**SPEAKERS**

Loudness up to 97dB

Power output 20+20W with 4 speaker units

Built-in DSP for echo and noise-cancellation

Speaker frequency range 250Hz to 20KH

**MICROPHONES**

4x built-in mics with 180° coverage

Range up to 8.5m+1

Microphone frequency range 300Hz to 8KHz

**BUTTONS**

Power, mute, Bluetooth, volume

**CONNECTIVITY**

USB 2.0, USB-C connector

Bluetooth 5.02 (A2DP, SBC, MPEG-4, AAC)

**DIMENSIONS (W X H X D)**

800 x 55 x 90 mm/31.5 x 2.17 x 3.54 in

**WEIGHT**

1.9 kg/4.19 lb

**MOUNTING**

Standalone (tabletop), Wall and TV mounting options



Explore our modular collaboration room solutions at [Lenovo.com/ThinkSmart](https://lenovo.com/ThinkSmart)

©2024 Lenovo. All rights reserved. These products are available while supplies last. Prices shown are subject to change without notice. For any questions concerning price, please contact your Lenovo Account Executive. Lenovo is not responsible for photographic or typographic errors. Warranty: For a copy of applicable warranties, write to: Warranty Information, 500 Park Offices Drive, RTP, NC 27709, Attn: Dept. ZPYA/B600. Lenovo makes no representation or warranty regarding third-party products or services. Trademarks: Lenovo, the Lenovo logo, Rescue and Recovery, ThinkPad, ThinkCentre, ThinkStation, ThinkVantage, and ThinkVision are trademarks or registered trademarks of Lenovo. Microsoft, Windows, and Vista are registered trademarks of Microsoft Corporation. AMD and the AMD Arrow logo are trademarks of Advanced Micro Devices, Inc. Other company, product and service names may be claimed as the property of others.

Lenovo