

Lenovo ThinkSmart

Lenovo ThinkSmart Core + Controller

Power your dynamic and sophisticated high-impact spaces with Lenovo ThinkSmart Core + Controller. Employee engagement soars with innovative technology that seamlessly integrates with collaboration platforms, dynamic audio components, and excellent video.

Powered by the Intel vPro® platform with Intel® Core™ i5 processor running on Windows 11, this scalable solution outperforms basic technologies wherever collaboration happens. Get rid of frustrating meeting spaces and create professional-grade AV experiences that are accessible for anyone.

Smarter
technology
for all

Lenovo

 Windows 11



Intel vPro® platform with
Intel® Core™ i5 processor

 Certified for
Microsoft Teams

Lenovo ThinkSmart Core + Controller

Lenovo ThinkSmart Core



COLLABORATIVE

With the ThinkSmart Core + Controller as the foundation of your high-impact spaces, technology makes digital meetings feel like face-to-face experiences. Certified for Microsoft Teams Rooms, this scalable solution works with other certified devices to amplify your technology investments. With multiple device ports and a top-of-the-line processor, each boardroom, executive space, training room, and auditorium can be designed according to its purpose, not its size.



PURPOSE-BUILT

Every detail of the Lenovo ThinkSmart Core + Controller is engineered with intention to help eliminate disruptions and technology failures. Thoughtful features include a hinged back door that locks down wires and a minimized external reset button—both designed to prevent users from accidentally disconnecting during meetings. Even setup and installation are easy with a built-in VESA mount and Wi-Fi antenna. And with a quiet fanless enclosure and wider operational temperatures, you can choose between housing the ThinkSmart Core in the meeting space or hidden in a server room or closet.



POWERFUL

Engineered for maximum reliability and 24/7/365 operation, this powerhouse delivers the high performance you need for consistent collaboration and easy management, all while maintaining energy efficiency. The Intel vPro® platform with Intel® Core™ i5 processor running on Windows 11 delivers enhanced security, responsive performance, and reliable connectivity.

Controllers



LENOVO THINKSMART CONTROLLER

The Lenovo ThinkSmart Controller is an intuitive 10.1-inch, 10-point touch display with the familiar Microsoft Teams Rooms interface that allows users to initiate and control the meeting, share content, and communicate easily. And no more smudges clouding the view, thanks to the anti-glare and anti-fingerprint display.



LENOVO IP CONTROLLER

The Lenovo IP Controller addresses the growing demand for HDMI on table with no lag, as well as PoE connectivity. The sleek 10.1-inch, 10-point touch display with the familiar Microsoft Teams Rooms interface allows for simple, effective collaboration. Plus, because it's wall mountable and can be installed up to 100 meters from the compute, the Lenovo IP Controller creates a clean aesthetic ideal for the modern workplace.

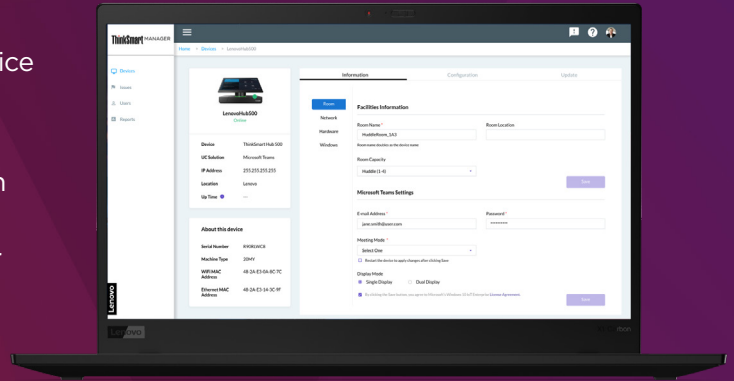


Security at every layer

ThinkSmart Core + Controller includes proactive security features at every layer. Delivering end-to-end peace of mind, Lenovo ThinkShield includes secure supply chain assurance, below-the-OS protection, and OS-to-cloud solutions.

ThinkSmart Manager¹ comes preloaded to leverage the remote manageability capabilities of Intel vPro[®] with Intel[®] Active Management Technology (AMT). This proprietary console provides your IT team with the ability to deploy, monitor, and troubleshoot Lenovo ThinkSmart devices from a single interface, regardless of the state or location of the devices.

- Secure supply chain for the entire lifecycle of the device
- Built-in adaptable security solutions, like self-healing BIOS, with ThinkShield
- Work-from-anywhere solutions and partnerships with world-class independent software security vendors
- Leverages a single console with ThinkSmart Manager to remotely deploy, manage, configure, update, and resolve issues



Smart Collaboration Professional Services



DEPLOY

Included for the first year, Lenovo ensures your Lenovo ThinkSmart devices function optimally through virtual deployment installation and integration support.



MAINTAIN

Included in the first year, we follow up with remote check-ins and assist with ongoing security updates to take the stress out of device maintenance.



ASSESS²

Lenovo is here to help identify any issues that could sidetrack your deployment by providing a detailed assessment of potential red flags and a follow-up report.



TRAIN²

Lenovo helps instruct all your audiences—IT and AV support teams, end users, and executives—on how to fully take advantage of your new technology.



DESIGN²

Lenovo evaluates and categorizes your meeting spaces by infrastructure and experience needs to design a “room standard” that includes hardware, software, and service recommendations.



ONSITE²

Lenovo provides white glove treatment through a dedicated, on-site specialist who can perform any of the above services, including complete physical set up, installation, configuration, and device troubleshooting.



¹ Lenovo ThinkSmart Manager comes pre-loaded on all Lenovo ThinkSmart Core devices. Lenovo ThinkSmart Manager has two levels: Basic and Premium. Premium is included with your Lenovo ThinkSmart Core purchase for one year. You can choose to continue service for an additional cost.

² Optional

Lenovo ThinkSmart Core + Controller

Product Specifications



Lenovo ThinkSmart Core

performance

PROCESSOR

Intel® 11th Gen Core™ i5 processor on Intel vPro® platform

OPERATING SYSTEM

Windows 11 IoT Enterprise SAC

MEMORY

16 GB (Dual-Channel) DDR4 3200MHz

STORAGE

256GB PCIe TLC SSD

GRAPHICS

Intel® Iris® X® Graphics

security

TPM 2.0

Kensington™ MiniSaver lock slot

Integrated Cable Management

connectivity

1x HDMI Ingest, 2x HDMI-Out, 1x RJ45 Gigabit Ethernet,
2x USB-A 3.2 Gen 2, 1x USB-A 3.2 Gen 1, 1x USB-C 3.2 Gen 2,
1x USB-C 3.2 Gen 1 for Lenovo ThinkSmart Controller,
1x Standard Think Power

WIFI

WLAN 802.11 AC (2x2)

Bluetooth® Low Energy (LE) 5.0

design

DIMENSIONS (W X D X H)

226 x 200 x 37.5 mm/8.90 x 7.87 x 1.48 in

WEIGHT

1.12 kg/2.47 lbs.

manageability

ThinkSmart Manager

warranty

3-year Premier Support

ThinkSmart-Start

1-year Deploy

1-year Maintain

1-year ThinkSmart Manager Premium

Controller

PORTS

Lenovo ThinkSmart Controller

1x USB-C 2.0, 1x 3.5mm headphone

Lenovo IP Controller

PoE, HDMI (in)

DISPLAY

10.1" 10-point touch

30° and 60° rotatable

Antiglare, anti-fingerprint

RESOLUTION

1280 x 800 (<340nits)

16:10 aspect ratio

SECURITY

Kensington™ MiniSaver Lock Slot

Explore our modular collaboration room solutions at [Lenovo.com/ThinkSmart](https://lenovo.com/ThinkSmart)



©2023 Lenovo. All rights reserved. These products are available while supplies last. Prices shown are subject to change without notice. For any questions concerning price, please contact your Lenovo Account Executive. Lenovo is not responsible for photographic or typographic errors. Warranty: For a copy of applicable warranties, write to: Warranty Information, 500 Park Offices Drive, RTP, NC 27709, Attn: Dept. ZPYA/B600. Lenovo makes no representation or warranty regarding third-party products or services. Trademarks: Lenovo, the Lenovo logo, Rescue and Recovery, ThinkPad, ThinkCentre, ThinkStation, ThinkVantage, and ThinkVision are trademarks or registered trademarks of Lenovo. Microsoft, Windows, and Vista are registered trademarks of Microsoft Corporation. AMD and the AMD Arrow logo are trademarks of Advanced Micro Devices, Inc. Other company, product and service names may be claimed as the property of others.

Lenovo